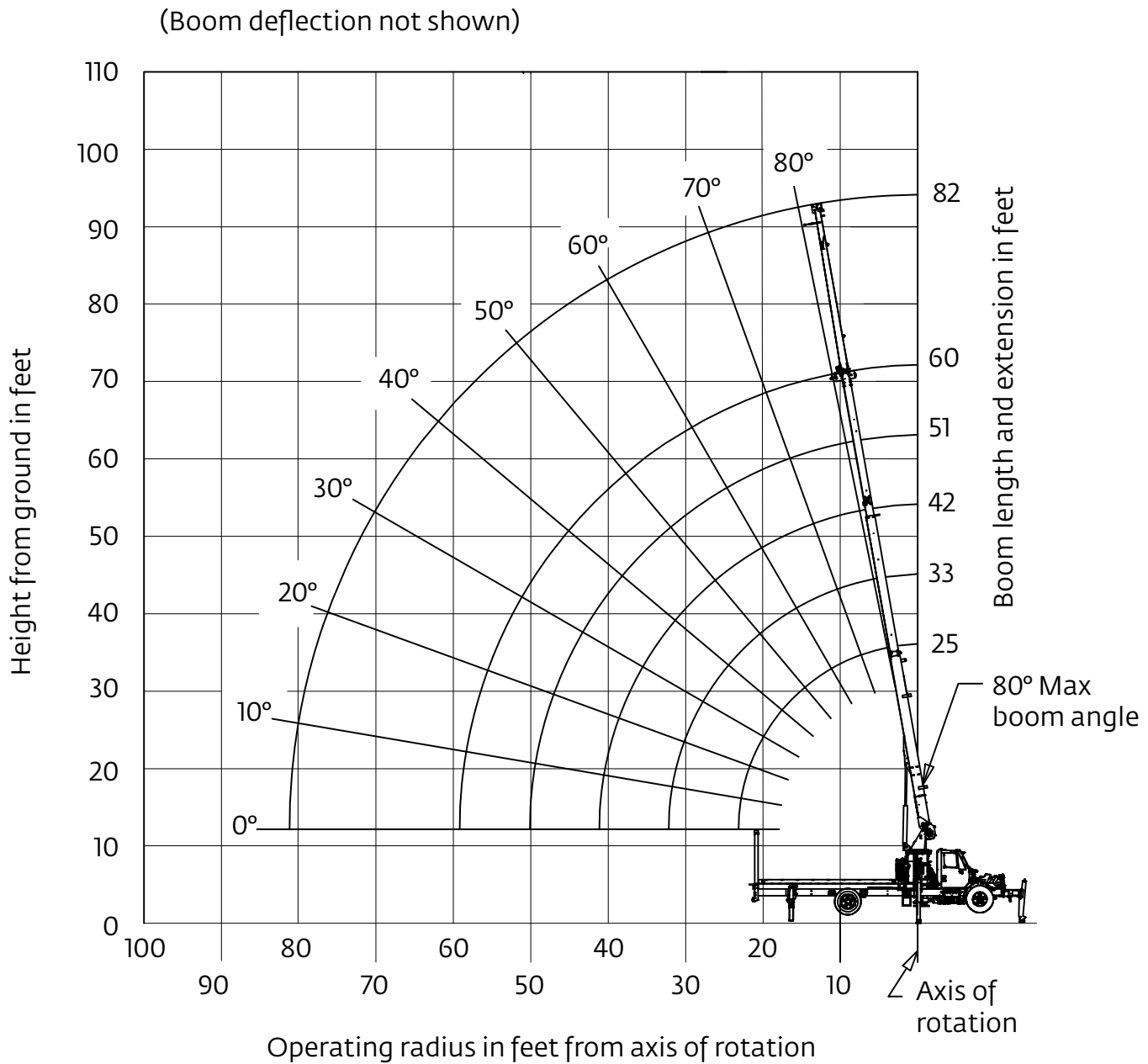


Working range

10,3 m (60 ft) main boom, full-span outrigger, with 6,71 m (22 ft) jib



Load chart

10,3 m (60 ft) main boom, full-span outrigger, 360°, without stowed jib

Radius in feet	#01				
	Main boom length in feet				
	24	33-A	42-B	51-C	60
5	32,000 (80.0)				
8	22,500 (72.5)	19,700 (77.5)			
10	18,700 (67.2)	17,600 (73.9)	14,000 (77.9)		
12	16,200 (61.7)	15,300 (70.1)	13,000 (75.1)	9000 (78.2)	
14	14,200 (55.9)	13,450 (66.2)	11,500 (72.1)	8500 (76.0)	
16	12,600 (49.5)	12,000 (62.2)	9800 (69.1)	8000 (73.7)	4700 (76.8)
20	9800 (33.9)	9850 (53.5)	8100 (62.9)	6800 (69.3)	4500 (73.0)
25		7900 (40.8)	6800 (55.4)	6000 (63.1)	4200 (68.0)
30		6200 (24.4)	6200 (46.1)	5100 (56.3)	3950 (62.8)
35			5200 (34.7)	4500 (48.9)	3750 (57.2)
40			4050 (16.6)	4000 (40.3)	3400 (51.0)
45				3500 (29.4)	2900 (44.0)
50					2400 (35.8)
55					2200 (25.1)
Minimum boom angle (°) for indicated length (no load)					0
Maximum boom length (ft) at 0° boom angle (no load)					60

NOTE: () Boom angles are in degrees.

#LMI operating code. Refer to LMI manual for operating instructions.

Lifting capacities at zero degree boom angle					
Boom angle	Main boom length in feet				
	24	33-A	42-B	51-C	60
0°	5000 (23.7)	3500 (32.2)	2800 (41.2)	2150 (50.2)	1050 (59.2)

NOTE: () Reference radii in feet.

80044395

Load chart

10,3 m (60 ft) main boom, full-span outrigger, 360°, with 6,71 m (22 ft) jib

Radius in feet	#02				
	Main boom length in feet				
	24	33-A	42-B	51-C	60
5	31,650 (80.0)				
8	22,150 (72.5)	19,400 (77.5)			
10	18,350 (67.2)	17,300 (73.9)	13,750 (77.9)		
12	15,850 (61.7)	15,000 (70.1)	12,750 (75.1)	8800 (78.2)	
14	13,850 (55.9)	13,150 (66.2)	11,250 (72.1)	8300 (76.0)	
16	12,250 (49.5)	11,700 (62.2)	9550 (69.1)	7800 (73.7)	4550 (76.8)
20	9450 (33.9)	9550 (53.5)	7850 (62.9)	6600 (69.3)	4350 (73.0)
25		7600 (40.8)	6550 (55.4)	5800 (63.1)	4050 (68.0)
30		5900 (24.4)	5950 (46.1)	4900 (56.3)	3800 (62.8)
35			4950 (34.7)	4300 (48.9)	3600 (57.2)
40			3800 (16.6)	3800 (40.3)	3250 (51.0)
45				3300 (29.4)	2750 (44.0)
50					2250 (35.8)
55					2050 (25.1)
Minimum boom angle (°) for indicated length (no load)					0
Maximum boom length (ft) at 0° boom angle (no load)					60

NOTE: () Boom angles are in degrees.

#LMI operating code. Refer to LMI manual for operating instructions.

Lifting capacities at zero degree boom angle					
Boom angle	Main boom length in feet				
	24	33-A	42-B	51-C	60
0°	4650 (23.7)	3200 (32.2)	2550 (41.2)	1950 (50.2)	900 (59.2)

NOTE: () Reference radii in feet.

80044396

Load chart

10,3 m (60 ft) main boom, full-span outrigger, 360°, with 6,71 m (22 ft) jib

Radius in feet	#03
14.8	2000 (80.0)
21.5	1900 (75.0)
28.6	1550 (70.0)
35.3	1250 (65.0)
41.9	1100 (60.0)
48.1	950 (55.0)
53.9	850 (50.0)
58.9	800 (45.0)
64	700 (40.0)
67.8	650 (35.0)
71.5	600 (30.0)
Min. boom angle for indicated length (no load)	30°
Max. boom length at 0° boom angle (no load)	33 ft.

80043251A

NOTE: () Boom angles are in degrees.
#LMI operating code. Refer to LMI manual
for operating instructions.

Boom extension capacity notes:

1. All capacities above the bold line are based on structural strength of boom extension.
2. Extension may be used for single line lifting service.
3. Radii listed are for a fully extended boom with the boom extension erected. For main boom lengths less than fully extended, the rated loads are determined by boom angle. For boom angles not shown, use the rating of the next lower angle.
Warning: Operation of this machine with heavier loads than the capacities listed is strictly prohibited. Machine tipping with boom extension occurs rapidly and without advance warning.
4. Boom angle is the angle above or below horizontal of the longitudinal axis of the boom base section after lifting rated load.
5. Capacities listed are with outriggers properly extended and vertical jacks set.
6. Do not lift over the main boom nose when jib is pinned on the boom tip.