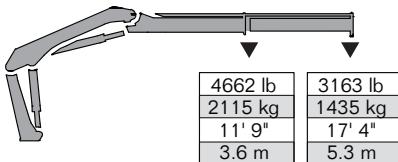


# > 810MCS/810RC

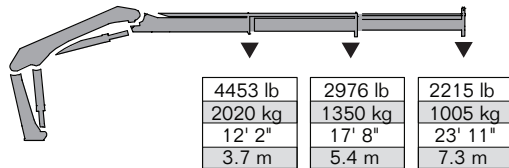
## Articulating Crane Technical Specifications

### 810MCS/810RC LIFTING CAPACITIES

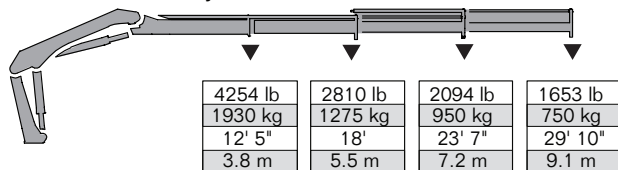
#### 810MCS/810RC - 1 Hydraulic



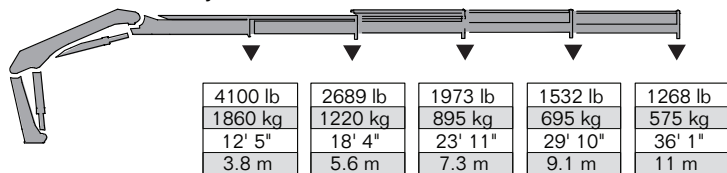
#### 810MCS/810RC - 2 Hydraulic



#### 810MCS/810RC - 3 Hydraulic



#### 810MCS/810RC - 4 Hydraulic



Available as a Manual Control Crane (810MCS) or Wireless Remote Control Crane (810RC)

#### MINIMUM CHASSIS SPECIFICATIONS

Front Axle Rating (GAWF)	7000 lb
Rear Axle Rating (GAWR)	12,460 lb
Minimum Resistance to Bending Moment per Frame Rail	810,000 lb-in



Note: Crane appearance subject to change.

#### SPECIFICATIONS

Crane Storage Height	6' 2" (1840 mm)
Crane Base Width	2' 2" (661 mm)
Rotational Torque	5900 ft-lb (8 kNm)
Rotation	400°
Optimum Pump Performance Fixed	6.6 gpm (25 L/min)
System Pressure	4714 psi (325 bar)
Oil Reservoir Capacity and Weight	14.5 gal (55 L) and 77 lb (35 kg)
Stabilizer Span and Weights	
Short Span	11' 2" (3400 mm)
Weight (manual out/hydraulic down)	253 lb (115 kg)
Weight (manual out/hydraulic down swing-up)	265 lb (120 kg)
Standard Span	14' 5" (4400 mm)
Weight (manual out/hydraulic down)	309 lb (140 kg)
Weight (manual out/hydraulic down swing-up)	319 lb (145 kg)
Wide Span	17' 1" (5200 mm)
Weight (manual out/hydraulic down)	352 lb (160 kg)
Weight (manual out/hydraulic down swing-up)	363 lb (165 kg)
Stabilizer Pad	5.5" (140 mm)

#### 810MCS/810RC SPECIFICATIONS

	1 - Hydraulic	2 - Hydraulic	3 - Hydraulic	4 - Hydraulic
Crane Rating*	54,858 ft-lb (7.6 tm)	54,135 ft-lb (7.5 tm)	52,692 ft-lb (7.3 tm)	51,249 ft-lb (7.1 tm)
Max Horizontal Reach	17' 4" (5.3 m)	23' 11" (7.3 m)	29' 10" (9.1 m)	36' 1" (11 m)
Max Vertical Reach	23' 11" (7.3 m)	30' 6" (9.3 m)	36' 1" (11 m)	42' 4" (12.9 m)
Max Capacity	8245 lb (3740 kg)	8068 lb (3660 kg)	7914 lb (3590 kg)	7804 lb (3540 kg)
Max Cap @ Max Reach	3163 lb (1435 kg)	2215 lb (1005 kg)	1653 lb (750 kg)	1268 lb (575 kg)
Crane Weight**	1466 lb (665 kg)	1631 lb (740 kg)	1785 lb (810 kg)	1918 lb (870 kg)

\*Crane rating (ft-lb) is the rated load (lb) multiplied by the respective distance (ft) from centerline of rotation with all extensions retracted and the inner and outer booms in a horizontal position, per ANSI B30.22. \*\*Crane weight is dry and does not include stabilizers, hydraulic tank and accessories.