

Working range



46,0 m (151 ft)



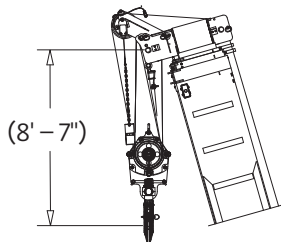
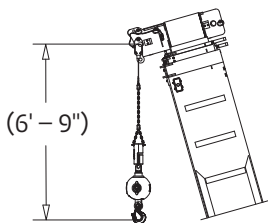
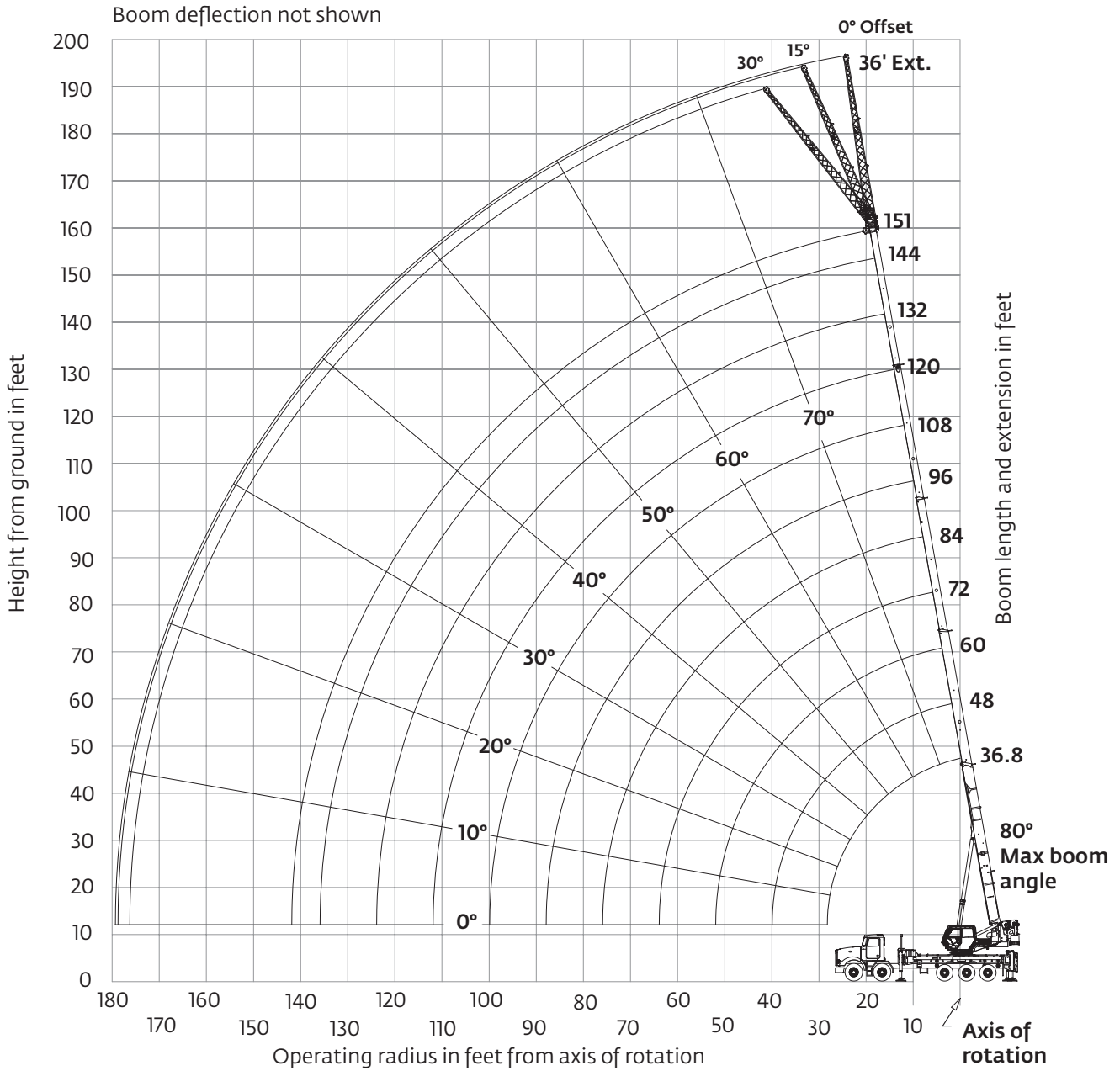
11 m (36 ft)



100%



360°



Dimensions are for largest furnished hook block and headache ball with anti-two-block activated.

* This drawing shows the physical reach of the machine. Always refer to load chart to see which portions of this diagram are valid for the specific machine configuration and where the loads are structurally or stability limited.

Load charts

NBT60L/NTC60L



11 m – 46 m (36 ft – 151 ft)



2722 kg (6000 lb)



100%



360°



Pounds

Radius in Feet	Main Boom Length in Feet											
	36.8	48	60	72	84	96	108	120	132	144	151	
6	120,000 (71.5)	49,600 (76.7)	—	—	—	—	—	—	—	—	—	—
8	101,000 (68)	49,600 (74.2)	49,600 (78.2)	—	—	—	—	—	—	—	—	—
10	88,250 (64.4)	49,600 (71.6)	49,600 (76.2)	49,600 (79.4)	—	—	—	—	—	—	—	—
12	78,100 (60.7)	49,600 (69)	49,600 (74.2)	49,600 (77.8)	—	—	—	—	—	—	—	—
15	66,300 (54.9)	49,600 (64.9)	49,600 (71.1)	46,700 (75.3)	39,700 (78)	33,200 (79.9)	—	—	—	—	—	—
20	52,300 (43.7)	49,600 (57.8)	49,600 (65.8)	42,050 (71)	36,100 (74.5)	30,250 (77)	23,550 (79.3)	—	—	—	—	—
25	37,200 (28.9)	40,550 (49.9)	41,300 (60.3)	38,150 (66.7)	32,950 (71)	27,400 (74.1)	21,150 (76.7)	18,600 (78.9)	—	—	—	—
30	—	31,500 (40.5)	32,300 (54.3)	32,750 (62.1)	30,250 (67.4)	24,700 (71.1)	19,100 (74.2)	16,950 (76.7)	14,500 (78.4)	11,300 (79.9)	—	—
35	—	25,250 (28.5)	26,000 (47.6)	26,450 (57.2)	26,700 (63.6)	22,350 (68)	17,250 (71.5)	15,450 (74.3)	13,900 (76.4)	11,300 (78)	10,050 (78.8)	—
40	—	—	21,350 (39.6)	21,850 (52)	22,150 (59.5)	20,300 (64.8)	15,700 (68.8)	14,150 (72)	12,800 (74.3)	11,300 (76.1)	10,050 (77)	—
45	—	—	17,800 (30)	18,300 (46.1)	18,550 (55.3)	18,600 (61.4)	14,350 (66.1)	12,950 (69.6)	11,750 (72.1)	10,700 (74.2)	10,050 (75.2)	—
50	—	—	13,050 (15.5)	15,450 (39.2)	15,750 (50.7)	16,000 (57.8)	13,200 (63)	11,900 (67.1)	10,850 (70)	9930 (72.3)	9470 (73.4)	—
55	—	—	—	13,200 (31.1)	13,400 (45.2)	13,700 (54)	12,150 (59.8)	11,000 (64.4)	10,000 (67.8)	9200 (70.3)	8780 (71.5)	—
60	—	—	—	11,100 (20.4)	11,100 (39.1)	11,750 (49.9)	11,250 (56.5)	10,150 (61.5)	9300 (65.4)	8540 (68.3)	8160 (69.6)	—
65	—	—	—	—	9460 (32)	10,050 (44.8)	9910 (53)	9460 (58.5)	8640 (62.8)	7940 (66.2)	7590 (67.7)	—
70	—	—	—	—	7960 (23.3)	8650 (39.2)	8510 (48.9)	8800 (55.4)	8030 (60.2)	7380 (63.9)	7070 (65.6)	—
75	—	—	—	—	5380 (8.2)	7440 (32.9)	7320 (44.2)	7850 (52.1)	7460 (57.4)	6840 (61.5)	6550 (63.4)	—
80	—	—	—	—	—	6380 (25.4)	6290 (39.1)	6790 (48.2)	6600 (54.6)	6260 (59.1)	5980 (61.2)	—
85	—	—	—	—	—	5460 (15)	5260 (33.4)	5850 (43.8)	5720 (51.6)	5580 (56.6)	5460 (58.9)	—
90	—	—	—	—	—	—	4520 (26.9)	5000 (39.1)	4930 (47.7)	4860 (54)	4990 (56.5)	—
95	—	—	—	—	—	—	3870 (18.6)	4250 (34)	4230 (43.6)	4210 (51)	4530 (54)	—
100	—	—	—	—	—	—	—	3560 (28.1)	3380 (39.2)	3400 (47.4)	3940 (51.1)	—
105	—	—	—	—	—	—	—	2940 (21.1)	2860 (34.5)	2880 (43.5)	3380 (47.5)	—
110	—	—	—	—	—	—	—	2370 (10.5)	2400 (29.2)	2410 (39.4)	2850 (43.8)	—
115	—	—	—	—	—	—	—	—	1980 (23)	1990 (35)	2340 (39.8)	—
120	—	—	—	—	—	—	—	—	1610 (14.8)	1610 (30.1)	1850 (35.6)	—
125	—	—	—	—	—	—	—	—	—	1270 (24.6)	1390 (31)	—
130	—	—	—	—	—	—	—	—	—	960 (17.7)	950 (25.7)	—
135	—	—	—	—	—	—	—	—	—	—	520 (19.5)	—

NOTE: () Boom angles are in degrees.

Boom Angle	Main Boom Length in Feet											
	36.8	48	60	72	84	96	108	120	132	144	151	
0°	14,400 (28.3)	10,000 (39.5)	6570 (51.5)	4360 (63.5)	2820 (75.5)	1690 (87.5)	820 (99.5)	—	—	—	—	—

NOTE: () Reference radii in feet.

THIS CHART IS ONLY A GUIDE AND SHOULD NOT BE USED TO OPERATE THE CRANE.

The individual crane's load chart, operating instructions and other instructional plates must be read and understood prior to operating the crane.

Load charts

NBT60L/NTC60L



11 m – 46 m (36 ft – 151 ft)



2722 kg (6000 lb)



100%



Over rear



Pounds

Radius in Feet	Main Boom Length in Feet										
	36.8	48	60	72	84	96	108	120	132	144	151
6	120,000 (71.5)	49,600 (76.7)	—	—	—	—	—	—	—	—	—
8	106,500 (68)	49,600 (74.2)	49,600 (78.2)	—	—	—	—	—	—	—	—
10	96,050 (64.4)	49,600 (71.6)	49,600 (76.2)	49,600 (79.4)	—	—	—	—	—	—	—
12	86,800 (60.7)	49,600 (69)	49,600 (74.2)	49,600 (77.8)	—	—	—	—	—	—	—
15	74,950 (54.9)	49,600 (64.9)	49,600 (71.1)	46,700 (75.3)	39,700 (78)	33,200 (79.9)	—	—	—	—	—
20	57,600 (43.7)	49,600 (57.8)	49,600 (65.8)	42,050 (71)	36,100 (74.5)	30,250 (77)	23,550 (79.3)	—	—	—	—
25	37,200 (28.9)	44,600 (49.9)	45,400 (60.3)	38,150 (66.7)	32,950 (71)	27,400 (74.1)	21,150 (76.7)	18,600 (78.9)	—	—	—
30	—	35,300 (40.5)	36,050 (54.3)	34,950 (62.1)	30,250 (67.4)	24,700 (71.1)	19,100 (74.2)	16,950 (76.7)	14,500 (78.4)	11,300 (79.9)	—
35	—	27,200 (28.5)	29,450 (47.6)	29,900 (57.2)	27,950 (63.6)	22,350 (68)	17,250 (71.5)	15,450 (74.3)	13,900 (76.4)	11,300 (78)	10,050 (78.8)
40	—	—	24,500 (39.6)	24,950 (52)	25,250 (59.5)	20,300 (64.8)	15,700 (68.8)	14,150 (72)	12,800 (74.3)	11,300 (76.1)	10,050 (77)
45	—	—	20,700 (30)	21,150 (46.1)	21,450 (55.3)	18,600 (61.4)	14,350 (66.1)	12,950 (69.6)	11,750 (72.1)	10,700 (74.2)	10,050 (75.2)
50	—	—	13,050 (15.5)	18,100 (39.2)	18,400 (50.7)	17,100 (57.8)	13,200 (63)	11,900 (67.1)	10,850 (70)	9930 (72.3)	9470 (73.4)
55	—	—	—	15,650 (31.1)	15,950 (45.2)	15,800 (54)	12,150 (59.8)	11,000 (64.4)	10,000 (67.8)	9200 (70.3)	8780 (71.5)
60	—	—	—	11,950 (20.4)	13,900 (39.1)	14,100 (49.9)	11,250 (56.5)	10,150 (61.5)	9300 (65.4)	8540 (68.3)	8160 (69.6)
65	—	—	—	—	12,050 (32)	12,350 (44.8)	10,450 (53)	9460 (58.5)	8640 (62.8)	7940 (66.2)	7590 (67.7)
70	—	—	—	—	10,350 (23.3)	10,900 (39.2)	9760 (48.9)	8800 (55.4)	8030 (60.2)	7380 (63.9)	7070 (65.6)
75	—	—	—	—	5380 (8.2)	9610 (32.9)	9120 (44.2)	8210 (52.1)	7460 (57.4)	6840 (61.5)	6550 (63.4)
80	—	—	—	—	—	8490 (25.4)	8530 (39.1)	7580 (48.2)	6840 (54.6)	6260 (59.1)	5980 (61.2)
85	—	—	—	—	—	5920 (15)	7300 (33.4)	6990 (43.8)	6290 (51.6)	5720 (56.6)	5460 (58.9)
90	—	—	—	—	—	—	6440 (26.9)	6450 (39.1)	5780 (47.7)	5240 (54)	4990 (56.5)
95	—	—	—	—	—	—	5590 (18.6)	5960 (34)	5310 (43.6)	4790 (51)	4550 (54)
100	—	—	—	—	—	—	—	5330 (28.1)	4880 (39.2)	4380 (47.4)	4110 (51.1)
105	—	—	—	—	—	—	—	4570 (21.1)	4490 (34.5)	4000 (43.5)	3690 (47.5)
110	—	—	—	—	—	—	—	2430 (10.5)	3930 (29.2)	3640 (39.4)	3310 (43.8)
115	—	—	—	—	—	—	—	—	3350 (23)	3320 (35)	2950 (39.8)
120	—	—	—	—	—	—	—	—	2580 (14.8)	3010 (30.1)	2630 (35.6)
125	—	—	—	—	—	—	—	—	—	2600 (24.6)	2330 (31)
130	—	—	—	—	—	—	—	—	—	2210 (17.7)	2050 (25.7)
135	—	—	—	—	—	—	—	—	—	—	1790 (19.5)
140	—	—	—	—	—	—	—	—	—	—	720 (10.5)

NOTE: () Boom angles are in degrees.

Boom Angle	Main Boom Length in Feet										
	36.8	48	60	72	84	96	108	120	132	144	151
0°	14,400 (28.3)	10,000 (39.5)	6570 (51.5)	4360 (63.5)	2820 (75.5)	1690 (87.5)	820 (99.5)	—	—	—	—

NOTE: () Reference radii in feet.

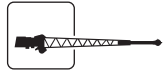
The individual crane's load chart, operating instructions and other instructional plates must be read and understood prior to operating the crane.

Load charts

NBT60L/NTC60L



11 m – 46 m (36 ft – 151 ft)



11 m (36 ft)



2722 kg (6000 lb)



100%



360°



Pounds

Radius in Feet	Main Boom Length in Feet											
	0° OFFSET ANGLE				15° OFFSET ANGLE				30° OFFSET ANGLE			
	120	132	144	151	120	132	144	151	120	132	144	151
30	7720 (78.4)	—	—	—	—	—	—	—	—	—	—	—
35	7720 (76.9)	6370 (78.5)	5060 (79.9)	4300 (80)	—	—	—	—	—	—	—	—
40	7720 (75.4)	6370 (77)	5060 (78.5)	4300 (78.8)	7000 (79)	—	—	—	—	—	—	—
45	7720 (73.9)	6370 (75.6)	5060 (77.2)	4300 (77.6)	6730 (77.5)	—	—	—	—	—	—	—
50	7670 (72.3)	6370 (74.1)	5060 (75.8)	4300 (76.3)	6540 (76.1)	6400 (77.1)	—	—	5660 (78.8)	5440 (78.4)	—	—
55	7260 (70.7)	6370 (72.7)	5060 (74.5)	4300 (75.1)	6360 (74.6)	6150 (75.8)	5590 (76.8)	4940 (77.3)	5530 (77.3)	5350 (77)	—	—
60	6880 (69.1)	6370 (71.2)	5060 (73.1)	4300 (73.8)	6100 (73.1)	5880 (74.4)	5590 (75.6)	4940 (76.1)	5420 (75.7)	5190 (75.6)	5190 (78.1)	—
65	6520 (67.4)	6260 (69.7)	5060 (71.7)	4300 (72.6)	5810 (71.6)	5620 (73.1)	5370 (74.3)	4940 (74.9)	5320 (74.1)	4990 (74.1)	5000 (76.8)	4870 (77.4)
70	6180 (65.7)	5960 (68.1)	5060 (70.2)	4300 (71.3)	5550 (70)	5380 (71.7)	5160 (73)	4940 (73.7)	5140 (72.5)	4800 (72.6)	4810 (75.5)	4700 (76.2)
75	5870 (64)	5690 (66.5)	5060 (68.8)	4300 (70)	5300 (68.4)	5150 (70.2)	4960 (71.7)	4840 (72.5)	4940 (70.8)	4630 (71.1)	4640 (74.2)	4540 (74.9)
80	5580 (62.2)	5400 (64.9)	4990 (67.3)	4300 (68.6)	5070 (66.7)	4930 (68.7)	4760 (70.4)	4760 (71.2)	4760 (68.8)	4460 (69.5)	4470 (72.8)	4380 (73.6)
85	5310 (59.9)	5060 (63.2)	4680 (65.7)	4300 (67.2)	4860 (64.4)	4730 (67.2)	4580 (69)	4480 (69.9)	4580 (66.1)	4310 (67.2)	4320 (71.4)	4230 (72.3)
90	5070 (57.4)	4750 (61.3)	4380 (64.2)	4200 (65.8)	4660 (61.9)	4550 (65.3)	4400 (67.6)	4250 (68.6)	4420 (63.4)	4160 (64.6)	4170 (70)	4090 (71)
95	4700 (54.8)	4450 (59.1)	4100 (62.6)	3930 (64.1)	4480 (59.3)	4370 (62.9)	4150 (66.1)	3980 (67.2)	4270 (60.6)	4020 (62)	4030 (68.1)	3960 (69.6)
100	4110 (52.2)	3990 (56.8)	3840 (60.6)	3670 (62.2)	4310 (56.7)	4200 (60.4)	3890 (63.8)	3730 (65.5)	4130 (57.7)	3900 (59.3)	3900 (65.7)	3820 (67.5)
105	3580 (49.4)	3460 (54.4)	3340 (58.5)	3250 (60.2)	3920 (53.9)	3830 (57.9)	3650 (61.5)	3500 (63.2)	4010 (54.6)	3590 (56.5)	3730 (63.3)	3580 (65.2)
110	3110 (46.5)	2990 (51.9)	2870 (56.3)	2770 (58.2)	3410 (51)	3330 (55.3)	3240 (59.1)	3150 (60.9)	3650 (51.5)	3100 (53.6)	3500 (60.8)	3360 (62.8)
115	2680 (43.4)	2560 (49.4)	2440 (54.1)	2350 (56.1)	2950 (47.9)	2870 (52.6)	2780 (56.6)	2700 (58.6)	3150 (48.1)	2660 (50.6)	3050 (58.2)	2980 (60.4)
120	2300 (40.1)	2180 (46.7)	2060 (51.8)	1960 (53.9)	2540 (44.6)	2450 (49.8)	2360 (54.1)	2280 (56.1)	2700 (44.5)	2250 (47.4)	2600 (55.5)	2540 (57.8)
125	1950 (36.6)	1830 (43.9)	1710 (49.5)	1610 (51.2)	2160 (41.1)	2070 (46.8)	1990 (51.4)	1910 (53.6)	2290 (40.6)	1880 (44)	2200 (52.8)	2130 (55.2)
130	1640 (32.7)	1510 (40.9)	1390 (47)	1290 (48.3)	1810 (37.2)	1730 (43.7)	1640 (48.7)	1560 (51)	1910 (36)	1530 (40.4)	1830 (49.9)	1760 (52.5)
135	1350 (27.8)	1220 (37.6)	1090 (44.4)	1000 (45.3)	1490 (31.6)	1410 (40.3)	1320 (45.8)	1240 (48.3)	—	1210 (36.3)	1490 (46.8)	1420 (49.7)
140	1090 (20.9)	950 (34.1)	830 (41.6)	730 (42.2)	1190 (24.1)	1110 (36.6)	1030 (42.8)	950 (45.5)	—	810 (36.3)	1170 (43.6)	1110 (46.8)
145	870 (12)	710 (29.8)	580 (38.6)	—	—	840 (31.9)	760 (39.5)	680 (42.5)	—	—	870 (40.2)	820 (43.7)
150	—	—	—	—	—	590 (25.4)	510 (36)	—	—	—	600 (36.4)	540 (40.4)

NOTE: () Boom angles are in degrees.

THIS CHART IS ONLY A GUIDE AND SHOULD NOT BE USED TO OPERATE THE CRANE.

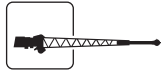
The individual crane's load chart, operating instructions and other instructional plates must be read and understood prior to operating the crane.

Load charts

NBT60L/NTC60L



11 m – 46 m (36 ft – 151 ft)



11 m (36 ft)



2722 kg (6000 lb)



100%



Over rear



Pounds

Radius in Feet	Main Boom Length in Feet											
	0° OFFSET ANGLE				15° OFFSET ANGLE				30° OFFSET ANGLE			
	120	132	144	151	120	132	144	151	120	132	144	151
30	7720 (78.4)	—	—	—	—	—	—	—	—	—	—	—
35	7720 (76.9)	6370 (78.5)	5060 (79.9)	4300 (80)	—	—	—	—	—	—	—	—
40	7720 (75.4)	6370 (77)	5060 (78.5)	4300 (78.8)	7000 (79)	—	—	—	—	—	—	—
45	7720 (73.9)	6370 (75.6)	5060 (77.2)	4300 (77.6)	6730 (77.5)	—	—	—	—	—	—	—
50	7670 (72.3)	6370 (74.1)	5060 (75.8)	4300 (76.3)	6540 (76.1)	6400 (77.1)	—	—	5660 (78.8)	—	—	—
55	7260 (70.7)	6370 (72.7)	5060 (74.5)	4300 (75.1)	6360 (74.6)	6150 (75.8)	5590 (76.8)	4940 (77.3)	5530 (77.3)	5440 (78.4)	—	—
60	6880 (69.1)	6370 (71.2)	5060 (73.1)	4300 (73.8)	6100 (73.1)	5880 (74.4)	5590 (75.6)	4940 (76.1)	5420 (75.7)	5350 (77)	5190 (78.1)	—
65	6520 (67.4)	6260 (69.7)	5060 (71.7)	4300 (72.6)	5810 (71.6)	5620 (73.1)	5370 (74.3)	4940 (74.9)	5320 (74.1)	5190 (75.6)	5000 (76.8)	4870 (77.4)
70	6180 (65.7)	5960 (68.1)	5060 (70.2)	4300 (71.3)	5550 (70)	5380 (71.7)	5160 (73)	4940 (73.7)	5140 (72.5)	4990 (74.1)	4810 (75.5)	4700 (76.2)
75	5870 (64)	5690 (66.5)	5060 (68.8)	4300 (70)	5300 (68.4)	5150 (70.2)	4960 (71.7)	4840 (72.5)	4940 (70.8)	4800 (72.6)	4640 (74.2)	4540 (74.9)
80	5580 (62.2)	5400 (64.9)	4990 (67.3)	4300 (68.6)	5070 (66.7)	4930 (68.7)	4760 (70.4)	4660 (71.2)	4760 (68.8)	4630 (71.1)	4470 (72.8)	4380 (73.6)
85	5310 (59.9)	5060 (63.2)	4680 (65.7)	4300 (67.2)	4860 (64.4)	4730 (67.2)	4580 (69)	4480 (69.9)	4580 (66.1)	4460 (69.5)	4320 (71.4)	4230 (72.3)
90	5070 (57.4)	4750 (61.3)	4380 (64.2)	4200 (65.8)	4660 (61.9)	4550 (65.3)	4400 (67.6)	4250 (68.6)	4420 (63.4)	4310 (67.2)	4170 (70)	4090 (71)
95	4830 (54.8)	4450 (59.1)	4100 (62.6)	3930 (64.1)	4480 (59.3)	4370 (62.9)	4150 (66.1)	3980 (67.2)	4270 (60.6)	4160 (64.6)	4030 (68.1)	3960 (69.6)
100	4540 (52.2)	4170 (56.8)	3840 (60.6)	3670 (62.2)	4310 (56.7)	4200 (60.4)	3890 (63.8)	3730 (65.5)	4130 (57.7)	4020 (62)	3900 (65.7)	3820 (67.5)
105	4270 (49.4)	3920 (54.4)	3600 (58.5)	3380 (60.2)	4150 (53.9)	3950 (57.9)	3650 (61.5)	3500 (63.2)	4010 (54.6)	3900 (59.3)	3730 (63.3)	3580 (65.2)
110	4020 (46.5)	3680 (51.9)	3370 (56.3)	3020 (58.2)	4010 (51)	3710 (55.3)	3420 (59.1)	3240 (60.9)	3890 (51.5)	3780 (56.5)	3500 (60.8)	3360 (62.8)
115	3790 (43.4)	3450 (49.4)	3150 (54.1)	2690 (56.1)	3810 (47.9)	3490 (52.6)	3200 (56.6)	2900 (58.6)	3780 (48.1)	3550 (53.6)	3280 (58.2)	3060 (60.4)
120	3570 (40.1)	3240 (46.7)	2900 (51.8)	2390 (53.9)	3600 (44.6)	3280 (49.8)	3000 (54.1)	2580 (56.1)	3650 (44.5)	3340 (50.6)	3070 (55.5)	2730 (57.8)
125	3310 (36.6)	3030 (43.9)	2640 (49.5)	2110 (51.2)	3400 (41.1)	3080 (46.8)	2810 (51.4)	2290 (53.6)	3440 (40.6)	3140 (47.4)	2880 (52.8)	2430 (55.2)
130	2940 (32.7)	2780 (40.9)	2400 (47)	1850 (48.3)	3110 (37.2)	2900 (43.7)	2560 (48.7)	2020 (51)	3210 (36)	2950 (44)	2690 (49.9)	2140 (52.5)
135	2600 (27.8)	2470 (37.6)	2170 (44.4)	1610 (45.3)	2740 (31.6)	2660 (40.3)	2320 (45.8)	1770 (48.3)	—	2760 (40.4)	2440 (46.8)	1880 (49.7)
140	2300 (20.9)	2160 (34.1)	1960 (41.6)	1390 (42.2)	2400 (24.1)	2320 (36.6)	2090 (42.8)	1530 (45.5)	—	2410 (36.3)	2190 (43.6)	1630 (46.8)
145	1320 (12)	1870 (29.8)	1750 (38.6)	1180 (39)	—	2010 (31.9)	1870 (39.5)	1310 (42.5)	—	—	1960 (40.2)	1390 (43.7)
150	—	1620 (23.4)	1480 (35.4)	990 (35.6)	—	1720 (25.4)	1640 (36)	1100 (39.4)	—	—	1720 (36.4)	1170 (40.4)
155	—	1240 (15.7)	1240 (31.8)	810 (31.9)	—	1450 (17.5)	1370 (31.9)	910 (36)	—	—	—	960 (36.8)
160	—	—	1010 (25.7)	630 (27.9)	—	—	1110 (26.4)	720 (32.2)	—	—	—	—
165	—	—	810 (18.7)	—	—	—	880 (19.8)	550 (27.1)	—	—	—	—

NOTE: () Boom angles are in degrees.

THIS CHART IS ONLY A GUIDE AND SHOULD NOT BE USED TO OPERATE THE CRANE.

The individual crane's load chart, operating instructions and other instructional plates must be read and understood prior to operating the crane.

Working range diagram



46,0 m (151 ft)



8 m - 14 m (26 ft - 45 ft)

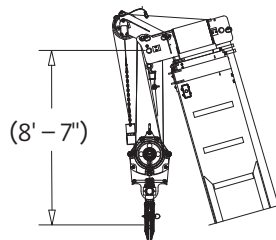
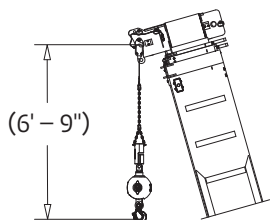
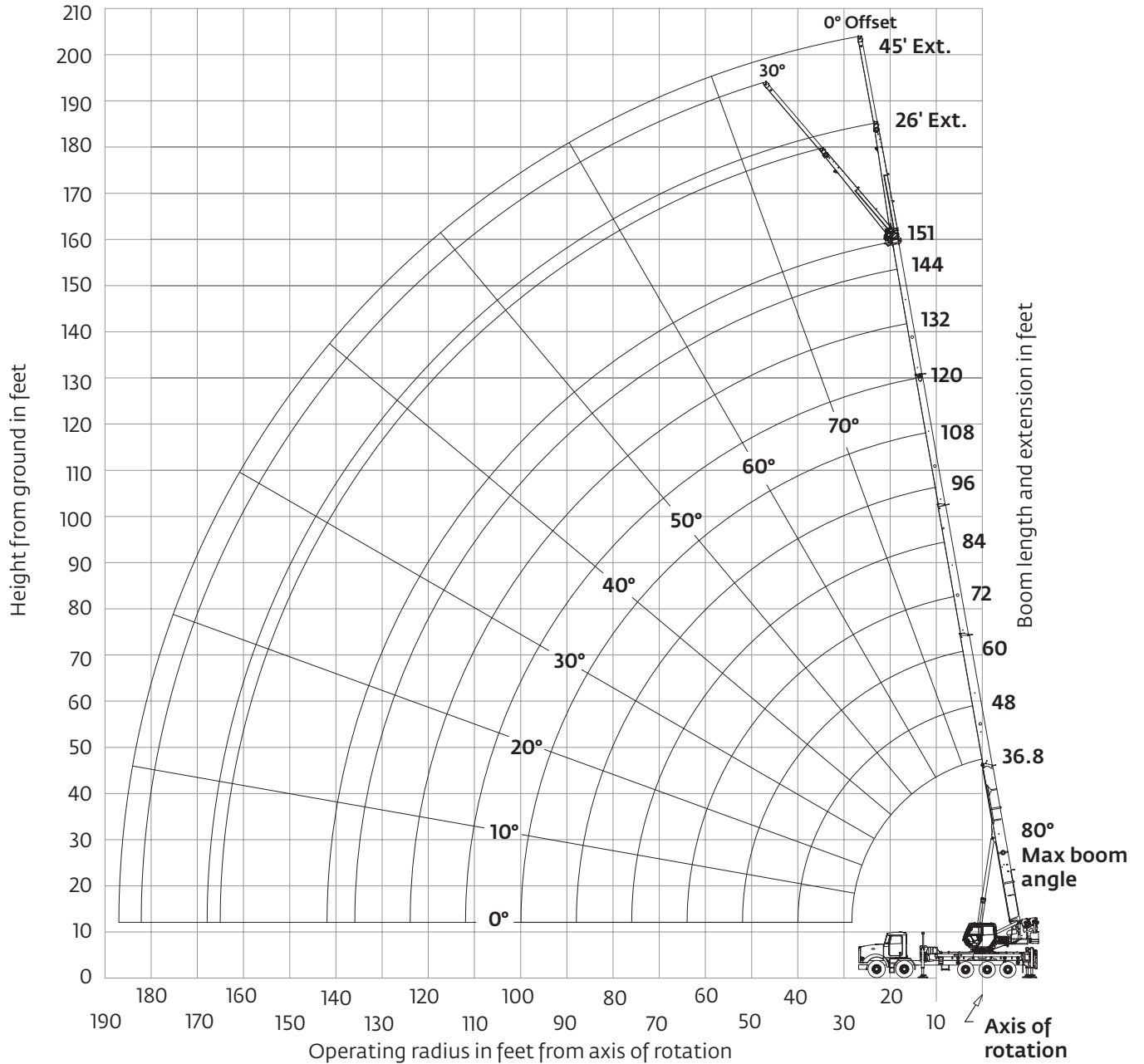


100%



360°

Boom deflection not shown



Dimensions are for largest furnished hook block and headache ball with anti-two-block activated.

**This drawing shows the physical reach of the machine. Always refer to load chart to see which portions of this diagram are valid for the specific machine configuration and where the loads are structurally or stability limited.*

Load charts

NBT60L/NTC60L



11 m – 46 m (36 ft – 151 ft)



8 m – 14 m (26 ft – 45 ft)



2722 kg (6000 lb)



100%



360°



Pounds

Radius in Feet	Main Boom Length in Feet			
	26 FT EXTENSION AT 0° OFFSET ANGLE	26 FT EXTENSION AT 30° OFFSET ANGLE	45 FT EXTENSION AT 0° OFFSET ANGLE	45 FT EXTENSION AT 30° OFFSET ANGLE
	151	151	151	151
40	5200 (79.6)	—	3700 (79.1)	—
45	5200 (78)	—	3700 (78)	—
50	5200 (76.4)	—	3700 (76.8)	—
55	5200 (74.8)	4800 (78.3)	3700 (75.7)	—
60	5200 (73.2)	4710 (76.6)	3700 (74.5)	—
65	4900 (71.6)	4530 (74.7)	3700 (73.3)	2500 (78.8)
70	4600 (69.9)	4320 (72.9)	3700 (72.1)	2500 (77.5)
75	4350 (68.2)	4130 (71)	3700 (70.9)	2500 (76.1)
80	4110 (66.5)	4000 (69.1)	3610 (69.7)	2500 (74.7)
85	3900 (64.7)	3850 (67.5)	3430 (68.3)	2500 (73.2)
90	3750 (62.9)	3710 (65.9)	3190 (66.8)	2500 (71.7)
95	3420 (61)	3530 (64.3)	2980 (65.3)	2480 (70.2)
100	2830 (58.9)	3280 (62.4)	2740 (63.7)	2440 (68.7)
105	2310 (56.7)	2840 (59.9)	2560 (62)	2400 (66.9)
110	1850 (54.4)	2320 (57.5)	2390 (60.3)	2360 (65)
115	1430 (52)	1850 (55.1)	2130 (58.4)	2320 (63)
120	1050 (49.6)	1420 (52.6)	1740 (56.5)	2280 (61)
125	700 (47.2)	1040 (49.9)	1390 (54.5)	2060 (58.9)
130	—	680 (47.2)	1070 (52.5)	1680 (56.8)
135	—	—	770 (50.3)	1330 (54.5)
140	—	—	500 (48.1)	1000 (52.2)
145	—	—	—	700 (49.7)

NOTE: () Boom angles are in degrees.

THIS CHART IS ONLY A GUIDE AND SHOULD NOT BE USED TO OPERATE THE CRANE.

The individual crane's load chart, operating instructions and other instructional plates must be read and understood prior to operating the crane.

Load charts

NBT60L/NTC60L



11 m – 46 m (36 ft – 151 ft)



8 m – 14 m (26 ft – 45 ft)



2722 kg (6000 lb)



100%



Over rear



Pounds

Radius in Feet	Main Boom Length in Feet			
	26 FT EXTENSION AT 0° OFFSET ANGLE	26 FT EXTENSION AT 30° OFFSET ANGLE	45 FT EXTENSION AT 0° OFFSET ANGLE	45 FT EXTENSION AT 30° OFFSET ANGLE
	151	151	151	151
40	5200 (79.6)	—	3700 (79.1)	—
45	5200 (78)	—	3700 (78)	—
50	5200 (76.4)	—	3700 (76.8)	—
55	5200 (74.8)	4800 (78.3)	3700 (75.7)	—
60	5200 (73.2)	4710 (76.6)	3700 (74.5)	—
65	4900 (71.6)	4530 (74.7)	3700 (73.3)	2500 (78.8)
70	4600 (69.9)	4320 (72.9)	3700 (72.1)	2500 (77.5)
75	4350 (68.2)	4130 (71)	3700 (70.9)	2500 (76.1)
80	4110 (66.5)	4000 (69.1)	3610 (69.7)	2500 (74.7)
85	3900 (64.7)	3850 (67.5)	3430 (68.3)	2500 (73.2)
90	3750 (62.9)	3710 (65.9)	3190 (66.8)	2500 (71.7)
95	3450 (61)	3530 (64.3)	2980 (65.3)	2480 (70.2)
100	3160 (58.9)	3280 (62.4)	2740 (63.7)	2440 (68.7)
105	2810 (56.7)	2940 (59.9)	2560 (62)	2400 (66.9)
110	2420 (54.4)	2670 (57.5)	2390 (60.3)	2360 (65)
115	2060 (52)	2400 (55.1)	2230 (58.4)	2320 (63)
120	1750 (49.6)	2090 (52.6)	2020 (56.5)	2280 (61)
125	1470 (47.2)	1730 (49.9)	1810 (54.5)	2220 (58.9)
130	1190 (44.6)	1410 (47.2)	1610 (52.5)	2040 (56.8)
135	—	1100 (44.4)	1400 (50.3)	1860 (54.5)
140	—	—	1180 (48.1)	1650 (52.2)
145	—	—	—	1380 (49.7)
150	—	—	—	1090 (47.1)

NOTE: () Boom angles are in degrees.

THIS CHART IS ONLY A GUIDE AND SHOULD NOT BE USED TO OPERATE THE CRANE.

The individual crane's load chart, operating instructions and other instructional plates must be read and understood prior to operating the crane.