

Load Rating Chart

Model 50110S



© Manitex 2000

NOTE: Additional copies of this Load Rating Chart can be purchased from your Manitex Distributor. When ordering, use the part number shown in the bottom left corner of this page.

LMI OPERATING CODES

| CODE | CRANE CONFIGURATION | OUTRIGGER CONFIGURATION | AREA OF OPERATION |
|------|---|-------------------------|--------------------|
| #1 | MAIN BOOM | FULLY EXTENDED | OVER REAR |
| #3 | MAIN BOOM | FULLY EXTENDED | FULL 360° |
| #4 | MAIN BOOM | MID POSITION | FULL 360° |
| #5 | MAIN BOOM | RETRACTED | FULL 360° |
| #6 | MAIN BOOM | ON TIRES | DIRECTLY OVER REAR |
| #7 | RETRACTED JIB 0° OFFSET | FULLY EXTENDED | OVER REAR |
| #8 | RETRACTED JIB 0° OFFSET | FULLY EXTENDED | FULL 360° |
| #9 | RETRACTED JIB 15° OFFSET | FULLY EXTENDED | OVER REAR |
| #10 | RETRACTED JIB 15° OFFSET | FULLY EXTENDED | FULL 360° |
| #11 | RETRACTED JIB 30° OFFSET | FULLY EXTENDED | OVER REAR |
| #12 | RETRACTED JIB 30° OFFSET | FULLY EXTENDED | FULL 360° |
| #13 | EXTENDED JIB 0° OFFSET | FULLY EXTENDED | OVER REAR |
| #14 | EXTENDED JIB 0° OFFSET | FULLY EXTENDED | FULL 360° |
| #15 | EXTENDED JIB 15° OFFSET | FULLY EXTENDED | OVER REAR |
| #16 | EXTENDED JIB 15° OFFSET | FULLY EXTENDED | FULL 360° |
| #17 | EXTENDED JIB 30° OFFSET | FULLY EXTENDED | OVER REAR |
| #18 | EXTENDED JIB 30° OFFSET | FULLY EXTENDED | FULL 360° |
| #19 | RETRACTED JIB 0° OFFSET | MID POSITION | FULL 360° |
| #20 | RETRACTED JIB 15° OFFSET | MID POSITION | FULL 360° |
| #21 | RETRACTED JIB 30° OFFSET | MID POSITION | FULL 360° |
| #22 | EXTENDED JIB 0° OFFSET | MID POSITION | FULL 360° |
| #23 | EXTENDED JIB 15° OFFSET | MID POSITION | FULL 360° |
| #24 | EXTENDED JIB 30° OFFSET | MID POSITION | FULL 360° |
| #25 | PERSONNEL LIFTING MAIN BOOM | FULLY EXTENDED | FULL 360° |
| #26 | PERSONNEL LIFTING RETR JIB 0° OFFSET | FULLY EXTENDED | FULL 360° |
| #27 | PERSONNEL LIFTING RETR JIB 15° OFFSET | FULLY EXTENDED | FULL 360° |
| #28 | PERSONNEL LIFTING RETR JIB 30° OFFSET | FULLY EXTENDED | FULL 360° |
| #29 | PERSONNEL LIFTING EXTENDED JIB 0° OFFSET | FULLY EXTENDED | FULL 360° |
| #30 | PERSONNEL LIFTING EXTENDED JIB 15° OFFSET | FULLY EXTENDED | FULL 360° |
| #31 | PERSONNEL LIFTING EXTENDED JIB 30° OFFSET | FULLY EXTENDED | FULL 360° |

WARNING

1. THE OPERATOR MUST READ AND UNDERSTAND THE OWNER'S MANUAL BEFORE OPERATING THIS CRANE.

2. POSITIONING OR OPERATION OF CRANE BEYOND AREAS SHOWN ON THIS CHART IS NOT INTENDED OR APPROVED EXCEPT WHERE SPECIFIED IN OWNER'S MANUAL.

3. LOADED BOOM ANGLES AT SPECIFIED BOOM LENGTHS GIVE ONLY AN APPROXIMATION OF THE OPERATING RADIUS. THE BOOM ANGLE BEFORE LOADING SHOULD BE GREATER TO ACCOUNT FOR DEFLECTIONS. DO NOT EXCEED THE OPERATING RADIUS FOR RATED LOADS.

4. THE OPERATING RADIUS SHOWN IN THE JIB RATING CHART IS FOR FULLY EXTENDED BOOM ONLY. WHEN BOOM IS NOT FULLY EXTENDED, USE ONLY LOADED BOOM ANGLE TO DETERMINE LOAD RATING OF JIB.

5. FOR BOOM ANGLES NOT SHOWN ON JIB LOAD RATING CHART, USE RATING OF NEXT LOWER BOOM ANGLE.

WARNING (CONTINUED)

6. FOR BOOM LENGTHS NOT SHOWN, USE RATING OF NEXT SHORTER OR LONGER BOOM LENGTH, WHICHEVER IS LESS. FOR RADII NOT SHOWN, USE RATING OF NEXT LONGER RADIUS.
7. CRANE LOAD RATINGS ON OUTRIGGERS ARE BASED ON FREELY SUSPENDED LOADS WITH THE MACHINE LEVELED AND STANDING ON A FIRM UNIFORM SUPPORTING SURFACE. NO ATTEMPT SHALL BE MADE TO MOVE A LOAD HORIZONTALLY ON THE GROUND IN ANY DIRECTION.
8. PRACTICAL WORKING LOADS DEPEND ON SUPPORTING SURFACE, WIND, AND OTHER FACTORS AFFECTING STABILITY SUCH AS HAZARDOUS SURROUNDINGS, EXPERIENCE OF PERSONNEL, AND PROPER HANDLING, ALL OF WHICH MUST BE TAKEN INTO ACCOUNT BY THE OPERATOR.
9. THE MAXIMUM LOAD WHICH MAY BE TELESCOPED IS LIMITED BY HYDRAULIC PRESSURE, BOOM ANGLE, AND BOOM LUBRICATION. IT IS SAFE TO ATTEMPT TO TELESCOPE ANY LOAD WITHIN THE LIMITS OF THE LOAD RATING CHART.

INFORMATION

1. DEDUCTIONS MUST BE MADE FROM RATED LOADS FOR STOWED JIB, OPTIONAL ATTACHMENTS, HOOKS, AND LOADBLOCKS (SEE DEDUCTION CHART). WEIGHTS OF SLINGS AND ALL OTHER LOAD HANDLING DEVICES SHALL BE CONSIDERED A PART OF THE LOAD.
2. LOAD RATINGS ABOVE THE HEAVY LINE ARE STRUCTURALLY LIMITED CAPACITIES. LOAD RATINGS BELOW THE HEAVY LINE ARE STABILITY LIMITED CAPACITIES AND DO NOT EXCEED 85% OF TIPPING.

DEFINITIONS

1. OPERATING RADIUS IS THE HORIZONTAL DISTANCE FROM THE AXIS OF ROTATION TO THE CENTER OF THE VERTICAL HOIST LINE OR TACKLE WITH LOAD APPLIED.
2. LOADED BOOM ANGLE IS THE INCLUDED ANGLE BETWEEN THE HORIZONTAL AND LONGITUDINAL AXES OF THE BOOM BASE AFTER LIFTING RATED LOAD AT RATED RADIUS.

ALLOWABLE LINE PULL

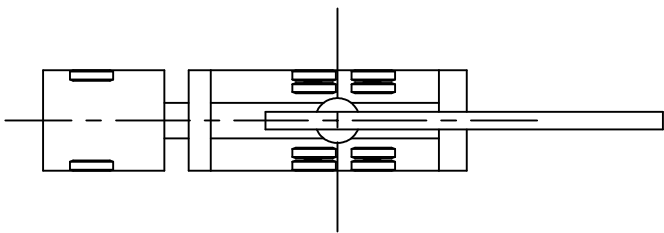
WARNING

| 1 PART LINE | 2 PART LINE | 3 PART LINE | 4 PART LINE | 5 PART LINE | 6 PART LINE | 7 PART LINE | 8 PART LINE | 9 PART LINE | 10 PART LINE | |
|-------------|-------------|-------------|-------------|-------------|-------------|-------------|-------------|-------------|--------------|--|
| | | | | | | | | | | <p>ANTI-TWO-BLOCK SYSTEM MUST BE IN GOOD OPERATING CONDITION BEFORE OPERATING CRANE.</p> <p>REFER TO THE OWNER'S MANUAL.</p> <p>KEEP AT LEAST 3 WRAPS OF LOAD LINE ON THE DRUM AT ALL TIMES.</p> |
| 10000 LBS | 20000 LBS | 30000 LBS | 40000 LBS | 50000 LBS | 60000 LBS | 70000 LBS | 80000 LBS | 90000 LBS | 100000 LBS | <p>5/8" 6 X 19 CLASS (3.5:1 SF) 35,000 LBS MIN BREAKING STRENGTH</p> <p>5/8" ROT RESISTANT (5:1 SF) 50,000 LBS MIN BREAKING STRENGTH</p> |

AREA OF OPERATIONS

ON TIRES

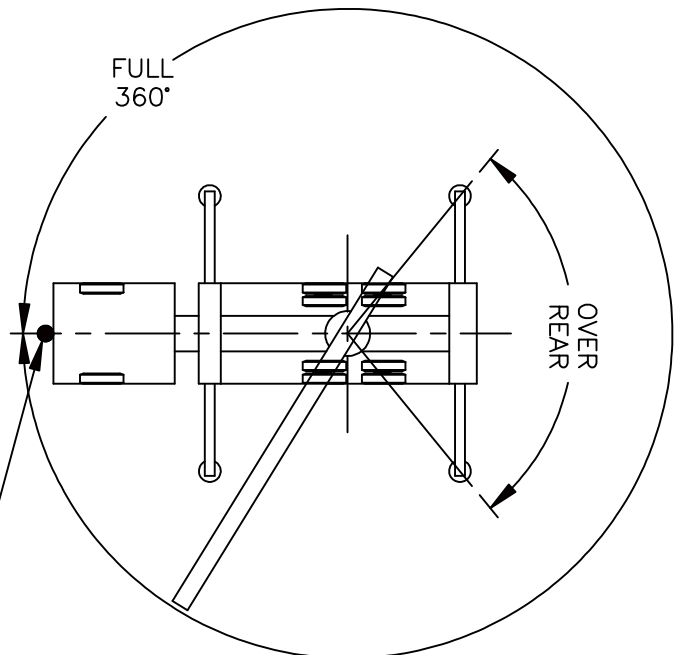
WHEN LIFTING ON TIRES, THE BOOM MUST BE CENTERED OVER THE REAR OF THE CRANE WITH THE SWING BRAKE AND THE HOUSELOCK ENGAGED.



IF SUPPLIED THE FRONT BUMPER STABILIZER MUST BE SET IN ACCORDANCE TO THE OPERATORS MANUAL BEFORE WORKING IN THE "FULL 360°" AREA

IF A FRONT BUMPER STABILIZER WAS NOT SUPPLIED THEN THE FRONT TIRES MUST BE IN CONTACT WITH THE GROUND BEFORE WORKING IN THE "FULL 360°" AREA

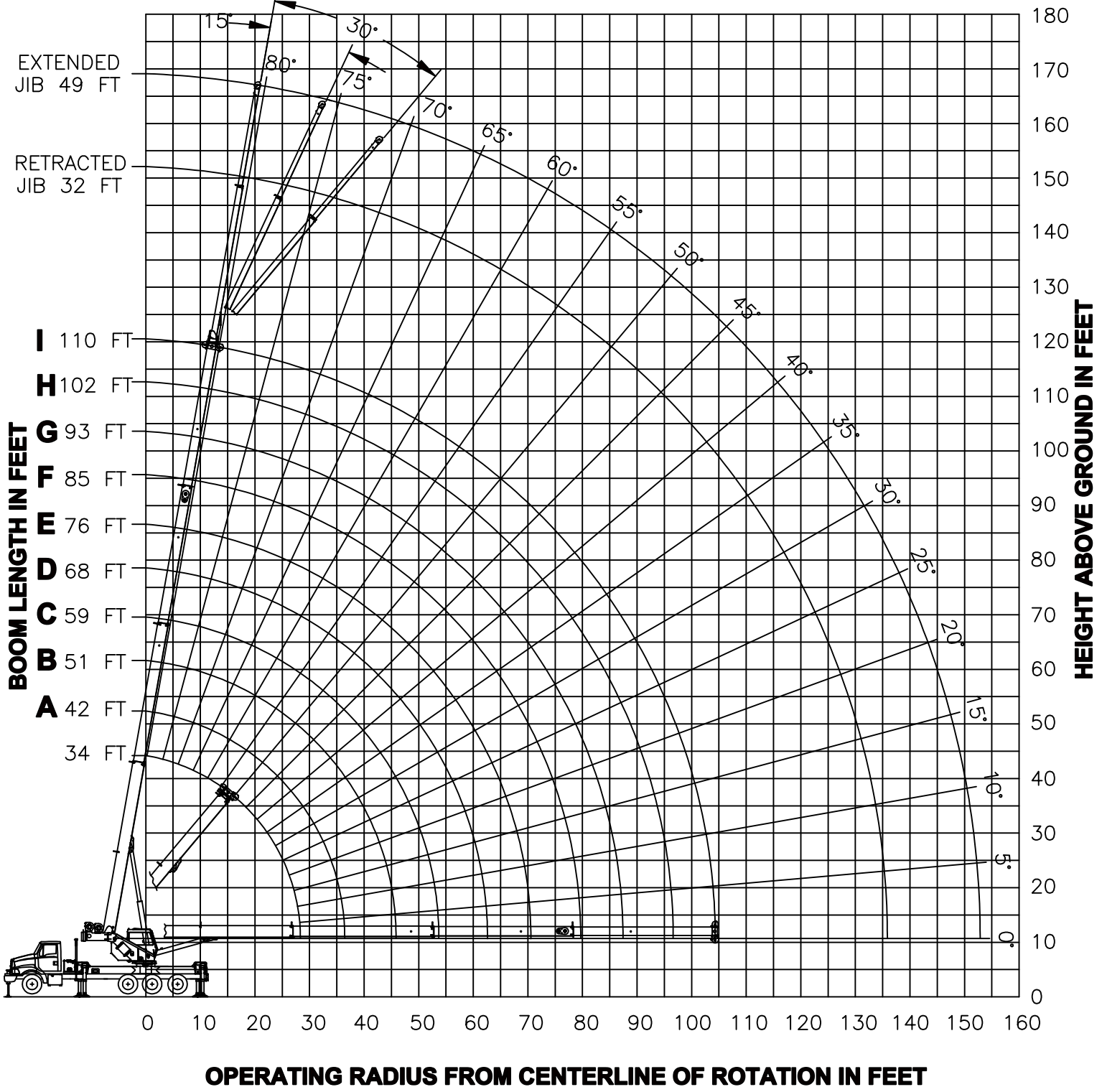
ON OUTRIGGERS



DEDUCTIONS FROM RATED LOADS FOR LOAD HANDLING DEVICES SUPPLIED BY MANITEX

- AUXILIARY BLOCK ----- 50 LBS
- ROOSTER SHEAVE ----- 70 LBS
- LIFTING FROM MAIN BOOM WITH JIB STOWED OR ERECTED ----- SEE LOAD CHART
- OVERHAUL BALL ----- SEE MANUFACTURER NAMEPLATE
- LOAD BLOCK ----- SEE MANUFACTURER NAMEPLATE

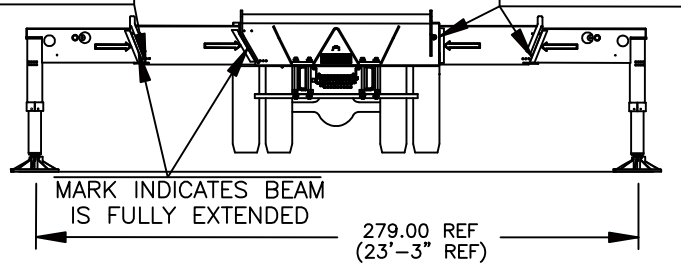
- RANGE DIAGRAM -



**USE THIS CHART ONLY
WHEN ALL OUTRIGGER
BEAMS ARE FULLY
EXTENDED**

PINS MUST BE
DISENGAGED FOR
THIS OUTRIGGER
CONFIGURATION

OUTRIGGER
BEAMS MUST
BE EXTENDED
TO MARK



MAIN BOOM LIFTING CAPACITIES

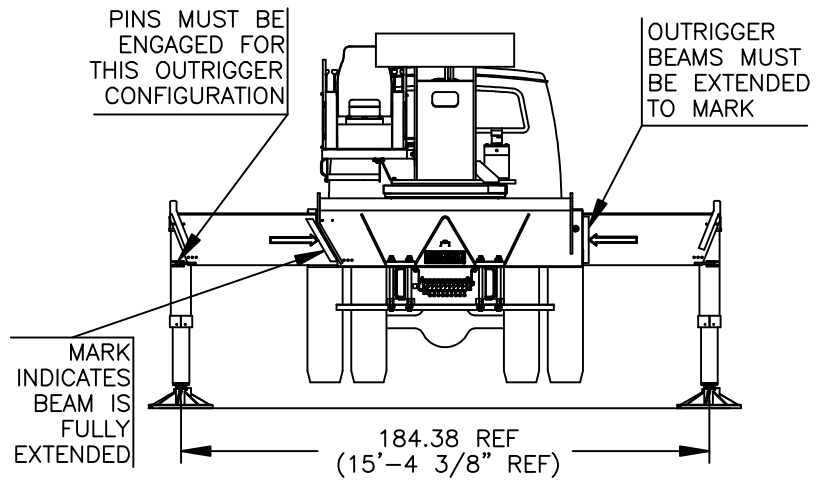
| LOAD RADIUS (FT) | BOOM LENGTH 34 FT | | | BOOM LENGTH 42 FT (A) | | | BOOM LENGTH 51 FT (B) | | | BOOM LENGTH 59 FT (C) | | | BOOM LENGTH 68 FT (D) | | | LOAD RADIUS (FT) |
|-------------------------|-------------------------|-----------------|-----------------|-------------------------|-----------------|-----------------|-------------------------|-----------------|-----------------|-------------------------|-----------------|-----------------|-------------------------|-----------------|-----------------|------------------|
| | LOADED BOOM ANGLE (DEG) | OVER REAR (LBS) | FULL 360° (LBS) | LOADED BOOM ANGLE (DEG) | OVER REAR (LBS) | FULL 360° (LBS) | LOADED BOOM ANGLE (DEG) | OVER REAR (LBS) | FULL 360° (LBS) | LOADED BOOM ANGLE (DEG) | OVER REAR (LBS) | FULL 360° (LBS) | LOADED BOOM ANGLE (DEG) | OVER REAR (LBS) | FULL 360° (LBS) | |
| 6 | 71 | 100000 | 100000 | | | | | | | | | | | | | 6 |
| 8 | 67.5 | 88500 | 88500 | 72 | 51000 | 51000 | 75.5 | 51000 | 51000 | 78 | 51000 | 51000 | | | | 8 |
| 10 | 63.5 | 78200 | 78200 | 69 | 51000 | 51000 | 73.5 | 51000 | 51000 | 76 | 51000 | 51000 | 78 | 47380 | 47380 | 10 |
| 12 | 60 | 70200 | 70200 | 66 | 51000 | 51000 | 71 | 51000 | 51000 | 74 | 51000 | 51000 | 76.5 | 45140 | 45140 | 12 |
| 15 | 53.5 | 60600 | 60600 | 61.5 | 51000 | 51000 | 67.5 | 51000 | 51000 | 71 | 49770 | 49770 | 74 | 42140 | 42140 | 15 |
| 20 | 42 | 46200 | 46200 | 53.5 | 46700 | 46700 | 61 | 46400 | 46400 | 65.5 | 44310 | 44310 | 69.5 | 37820 | 37820 | 20 |
| 25 | 26.5 | 35800 | 35800 | 44 | 36300 | 36300 | 54.5 | 36700 | 36700 | 60 | 36900 | 36900 | 65 | 32530 | 32530 | 25 |
| 30 | | | | 33 | 29340 | 25770 | 47 | 29720 | 26320 | 54.5 | 29930 | 26640 | 60 | 28560 | 26900 | 30 |
| 35 | | | | 15.5 | 22960 | 18990 | 38.5 | 23490 | 19560 | 48 | 23770 | 19860 | 55 | 23990 | 20100 | 35 |
| 40 | | | | | | | 27.5 | 18680 | 15160 | 40.5 | 18960 | 15460 | 49.5 | 19180 | 15690 | 40 |
| 45 | | | | | | | 7 | 15170 | 12010 | 32 | 15510 | 12370 | 43.5 | 15730 | 12600 | 45 |
| 50 | | | | | | | | | | 20.5 | 12910 | 10060 | 37 | 13140 | 10310 | 50 |
| 55 | | | | | | | | | | | | | 28.5 | 11110 | 8530 | 55 |
| 60 | | | | | | | | | | | | | 16.5 | 9470 | 7100 | 60 |
| STOWED JIB | | 1150 LBS | | | 930 LBS | | | 770 LBS | | | 670 LBS | | | 580 LBS | | |
| ERECTED JIB (RETRACTED) | | 2940 LBS | | | 2770 LBS | | | 2640 LBS | | | 2560 LBS | | | 2490 LBS | | |
| ERECTED JIB (EXTENDED) | | 3320 LBS | | | 3080 LBS | | | 2890 LBS | | | 2780 LBS | | | 2680 LBS | | |

DEDUCTIONS FOR JIB FROM MAIN BOOM CAPACITIES

| LOAD RADIUS (FT) | BOOM LENGTH 76 FT | | | BOOM LENGTH 85 FT (A) | | | BOOM LENGTH 93 FT (B) | | | BOOM LENGTH 102 FT (C) | | | BOOM LENGTH 110 FT (D) | | | LOAD RADIUS (FT) |
|-------------------------|-------------------------|-----------------|-----------------|-------------------------|-----------------|-----------------|-------------------------|-----------------|-----------------|-------------------------|-----------------|-----------------|-------------------------|-----------------|-----------------|------------------|
| | LOADED BOOM ANGLE (DEG) | OVER REAR (LBS) | FULL 360° (LBS) | LOADED BOOM ANGLE (DEG) | OVER REAR (LBS) | FULL 360° (LBS) | LOADED BOOM ANGLE (DEG) | OVER REAR (LBS) | FULL 360° (LBS) | LOADED BOOM ANGLE (DEG) | OVER REAR (LBS) | FULL 360° (LBS) | LOADED BOOM ANGLE (DEG) | OVER REAR (LBS) | FULL 360° (LBS) | |
| 12 | 78.5 | 39530 | 39530 | | | | | | | | | | | | | 12 |
| 15 | 76 | 37080 | 37080 | 78 | 30830 | 30830 | | | | | | | | | | 15 |
| 20 | 72 | 31860 | 31860 | 74.5 | 26790 | 26790 | 76.5 | 24480 | 24480 | 78 | 21860 | 21860 | | | | 20 |
| 25 | 68 | 27740 | 27740 | 71 | 23230 | 23230 | 73 | 21500 | 21500 | 75 | 19820 | 19820 | 76.5 | 15500 | 15500 | 25 |
| 30 | 64 | 24220 | 24220 | 67.5 | 20390 | 20390 | 70 | 19210 | 19210 | 72.5 | 17730 | 17730 | 74 | 15500 | 15500 | 30 |
| 35 | 59.5 | 21390 | 20260 | 63.5 | 18270 | 18270 | 66.5 | 17050 | 17050 | 69.5 | 15830 | 15830 | 71.5 | 14660 | 14660 | 35 |
| 40 | 55 | 19300 | 15840 | 60 | 16260 | 15980 | 63 | 15260 | 15260 | 66.5 | 14210 | 14210 | 68.5 | 13320 | 13320 | 40 |
| 45 | 50 | 15870 | 12750 | 55.5 | 14570 | 12870 | 59.5 | 13700 | 12960 | 63 | 12810 | 12810 | 66 | 12080 | 12080 | 45 |
| 50 | 45 | 13280 | 10450 | 51.5 | 13130 | 10580 | 56 | 12370 | 10660 | 60 | 11600 | 10740 | 63 | 10970 | 10800 | 50 |
| 55 | 39 | 11260 | 8680 | 47 | 11380 | 8810 | 52 | 11220 | 8890 | 56.5 | 10530 | 8970 | 59.5 | 10000 | 9020 | 55 |
| 60 | 32 | 9640 | 7270 | 41.5 | 9760 | 7400 | 47.5 | 9840 | 7490 | 53 | 9840 | 7560 | 56.5 | 9330 | 7610 | 60 |
| 65 | 23.5 | 8300 | 6120 | 36 | 8430 | 6250 | 43 | 8510 | 6340 | 49 | 8590 | 6410 | 53.5 | 8530 | 6470 | 65 |
| 70 | 7 | 7150 | 5130 | 29.5 | 7320 | 5300 | 38 | 7410 | 5390 | 45 | 7480 | 5460 | 50 | 7530 | 5520 | 70 |
| 75 | | | | 20.5 | 6370 | 4480 | 32.5 | 6470 | 4580 | 40.5 | 6540 | 4660 | 46 | 6590 | 4710 | 75 |
| 80 | | | | | | | 25.5 | 5650 | 3890 | 36 | 5740 | 3970 | 42 | 5790 | 4030 | 80 |
| 85 | | | | | | | 15 | 4940 | 3280 | 30 | 5030 | 3380 | 37.5 | 5090 | 3430 | 85 |
| 90 | | | | | | | | | | 23 | 4420 | 2850 | 33 | 4480 | 2910 | 90 |
| 95 | | | | | | | | | | 12 | 3860 | 2370 | 27 | 3930 | 2450 | 95 |
| 100 | | | | | | | | | | | | | 19 | 3440 | 2040 | 100 |
| STOWED JIB | | 520 LBS | | | 460 LBS | | | 420 LBS | | | 390 LBS | | | 360 LBS | | |
| ERECTED JIB (RETRACTED) | | 2440 LBS | | | 2400 LBS | | | 2370 LBS | | | 2340 LBS | | | 2320 LBS | | |
| ERECTED JIB (EXTENDED) | | 2610 LBS | | | 2550 LBS | | | 2510 LBS | | | 2460 LBS | | | 2430 LBS | | |

DEDUCTIONS FOR JIB FROM MAIN BOOM CAPACITIES

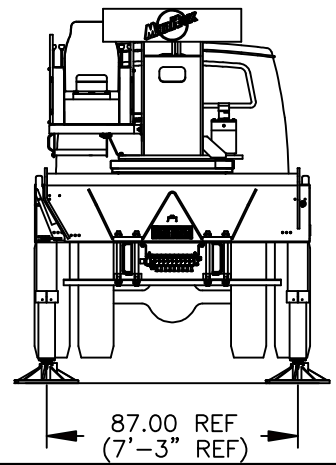
**USE THIS CHART ONLY
WHEN ALL OUTRIGGER
BEAMS ARE IN THE MID
POSITION**



MAIN BOOM LIFTING CAPACITIES

| LMI OPERATING CODE 4 | | | | | | | | | | | | | | | | | | | | | |
|--|------------------|-----------------|------------------|-----------------|------------------|-----------------|------------------|-----------------|------------------|-----------------|------------------|-----------------|------------------|-----------------|------------------|-----------------|------------------|-----------------|------------------|-----------------|----------|
| BOOM LENGTH | | | | | | | | | | | | | | | | | | | | | |
| RAD (FT) | 34 FT | | 42 FT | | 51 FT | | 59 FT | | 68 FT | | 76 FT | | 85 FT | | 93 FT | | 102 FT | | 110 FT | | RAD (FT) |
| | BOOM ANGLE (DEG) | FULL 360° (LBS) | BOOM ANGLE (DEG) | FULL 360° (LBS) | BOOM ANGLE (DEG) | FULL 360° (LBS) | BOOM ANGLE (DEG) | FULL 360° (LBS) | BOOM ANGLE (DEG) | FULL 360° (LBS) | BOOM ANGLE (DEG) | FULL 360° (LBS) | BOOM ANGLE (DEG) | FULL 360° (LBS) | BOOM ANGLE (DEG) | FULL 360° (LBS) | BOOM ANGLE (DEG) | FULL 360° (LBS) | BOOM ANGLE (DEG) | FULL 360° (LBS) | |
| 6 | 71 | 100000 | | | | | | | | | | | | | | | | | | | 6 |
| 8 | 67.5 | 88500 | 72 | 51000 | 75.5 | 51000 | 78 | 51000 | | | | | | | | | | | | | 8 |
| 10 | 63.5 | 78200 | 69 | 51000 | 73.5 | 51000 | 76 | 51000 | 78 | 47380 | | | | | | | | | | | 10 |
| 12 | 60 | 70200 | 66 | 51000 | 71 | 51000 | 74 | 51000 | 76.5 | 45140 | 78.5 | 39530 | | | | | | | | | 12 |
| 15 | 53.5 | 46430 | 61.5 | 47350 | 67.5 | 48010 | 71 | 48430 | 74 | 42140 | 76 | 37080 | 78 | 30830 | | | | | | | 15 |
| 20 | 42 | 25140 | 53.5 | 25850 | 61 | 26360 | 65.5 | 26680 | 69.5 | 26940 | 72 | 27120 | 74.5 | 26790 | 76.5 | 24480 | 78 | 21860 | | | 20 |
| 25 | 26.5 | 16070 | 44 | 16750 | 54.5 | 17200 | 60 | 17480 | 65 | 17700 | 68 | 17860 | 71 | 17990 | 73 | 18090 | 75 | 18190 | 76.5 | 15500 | 25 |
| 30 | | | 33 | 11690 | 47 | 12130 | 54.5 | 12390 | 60 | 12600 | 64 | 12740 | 67.5 | 12860 | 70 | 12950 | 72.5 | 13040 | 74 | 13100 | 30 |
| 35 | | | 15.5 | 8430 | 38.5 | 8910 | 48 | 9160 | 55 | 9360 | 59.5 | 9490 | 63.5 | 9610 | 66.5 | 9690 | 69.5 | 9770 | 71.5 | 9830 | 35 |
| 40 | | | | | 27.5 | 6660 | 40.5 | 6920 | 49.5 | 7120 | 55 | 7250 | 60 | 7360 | 63 | 7440 | 66.5 | 7510 | 68.5 | 7560 | 40 |
| 45 | | | | | 7 | 4950 | 32 | 5270 | 43.5 | 5470 | 50 | 5600 | 55.5 | 5710 | 59.5 | 5790 | 63 | 5860 | 66 | 5910 | 45 |
| 50 | | | | | | | 20.5 | 3990 | 37 | 4210 | 45 | 4340 | 51.5 | 4450 | 56 | 4520 | 60 | 4590 | 63 | 4640 | 50 |
| 55 | | | | | | | | | 28.5 | 3210 | 39 | 3340 | 47 | 3450 | 52 | 3530 | 56.5 | 3590 | 59.5 | 3640 | 55 |
| 60 | | | | | | | | | 16.5 | 2370 | 32 | 2530 | 41.5 | 2640 | 47.5 | 2720 | 53 | 2790 | 56.5 | 2830 | 60 |
| 65 | | | | | | | | | | | 23.5 | 1850 | 36 | 1970 | 43 | 2050 | 49 | 2120 | 53.5 | 2160 | 65 |
| 70 | | | | | | | | | | | 7 | 1250 | 29.5 | 1400 | 38 | 1480 | 45 | 1550 | 50 | 1600 | 70 |
| 75 | | | | | | | | | | | | | 20.5 | 910 | 32.5 | 1000 | 40.5 | 1070 | 46 | 1120 | 75 |
| 80 | | | | | | | | | | | | | | | | | | | | | 80 |
| 85 | | | | | | | | | | | | | | | | | | | | | 85 |
| 90 | | | | | | | | | | | | | | | | | | | | | 90 |
| 95 | | | | | | | | | | | | | | | | | | | | | 95 |
| STOWED | 1150 | | 930 | | 770 | | 670 | | 580 | | 520 | | 460 | | 420 | | 390 | | 360 | | |
| ERECTED RETRACTED | 2940 | | 2770 | | 2640 | | 2560 | | 2490 | | 2440 | | 2400 | | 2370 | | 2340 | | 2320 | | |
| ERECTED EXTENDED | 3320 | | 3080 | | 2890 | | 2780 | | 2680 | | 2610 | | 2550 | | 2510 | | 2460 | | 2430 | | |
| DEDUCTIONS FOR JIB FROM MAIN BOOM CAPACITIES (LBS) | | | | | | | | | | | | | | | | | | | | | |

**USE THIS CHART WHEN ALL
OUTRIGGER BEAMS ARE NOT IN
EITHER THE MID OR FULLY
EXTENDED POSITION**



MAIN BOOM LIFTING CAPACITIES

LMI OPERATING CODE 5

BOOM LENGTH

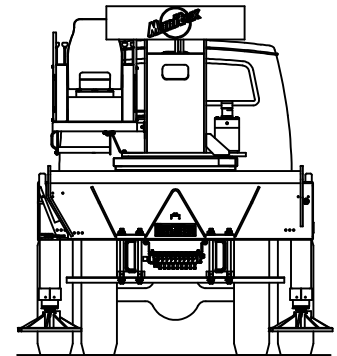
| RAD (FT) | 34 FT | | 42 FT | | 51 FT | | 59 FT | | 68 FT | | 76 FT | | 85 FT | | 93 FT | | 102 FT | | 110 FT | | RAD (FT) |
|----------------------|------------------------|-----------------------|------------------------|-----------------------|------------------------|-----------------------|------------------------|-----------------------|------------------------|-----------------------|------------------------|-----------------------|------------------------|-----------------------|------------------------|-----------------------|------------------------|-----------------------|------------------------|-----------------------|-------------|
| | BOOM ANGLE (DEG) | FULL 360° (LBS) | BOOM ANGLE (DEG) | FULL 360° (LBS) | BOOM ANGLE (DEG) | FULL 360° (LBS) | BOOM ANGLE (DEG) | FULL 360° (LBS) | BOOM ANGLE (DEG) | FULL 360° (LBS) | BOOM ANGLE (DEG) | FULL 360° (LBS) | BOOM ANGLE (DEG) | FULL 360° (LBS) | BOOM ANGLE (DEG) | FULL 360° (LBS) | BOOM ANGLE (DEG) | FULL 360° (LBS) | BOOM ANGLE (DEG) | FULL 360° (LBS) | |
| 6 | 71 | 86900 | | | | | | | | | | | | | | | | | | | 6 |
| 8 | 67.5 | 44510 | 72 | 45450 | 75.5 | 46160 | 78 | 46610 | | | | | | | | | | | | | 8 |
| 10 | 63.5 | 28710 | 69 | 29470 | 73.5 | 30020 | 76 | 30380 | 78 | 30680 | | | | | | | | | | | 10 |
| 12 | 60 | 20450 | 66 | 21110 | 71 | 21590 | 74 | 21900 | 76.5 | 22160 | 78.5 | 22330 | | | | | | | | | 12 |
| 15 | 53.5 | 13490 | 61.5 | 14080 | 67.5 | 14500 | 71 | 14770 | 74 | 14990 | 76 | 15140 | 78 | 15280 | | | | | | | 15 |
| 20 | 42 | 7530 | 53.5 | 8070 | 61 | 8450 | 65.5 | 8680 | 69.5 | 8870 | 72 | 9000 | 74.5 | 9120 | 76.5 | 9210 | 78 | 9290 | | | 20 |
| 25 | 26.5 | 4300 | 44 | 4580 | 54.5 | 5220 | 60 | 5440 | 65 | 5620 | 68 | 5740 | 71 | 5840 | 73 | 5920 | 75 | 5990 | 76.5 | 6040 | 25 |
| 30 | | | 33 | 2830 | 47 | 3200 | 54.5 | 3420 | 60 | 3590 | 64 | 3700 | 67.5 | 3810 | 70 | 3880 | 72.5 | 3940 | 74 | 3990 | 30 |
| 35 | | | 15.5 | 1400 | 38.5 | 1820 | 48 | 2030 | 55 | 2200 | 59.5 | 2320 | 63.5 | 2420 | 66.5 | 2480 | 69.5 | 2550 | 71.5 | 2590 | 35 |
| 40 | | | | | | | 40.5 | 1020 | 49.5 | 1200 | 55 | 1310 | 60 | 1410 | 63 | 1470 | 66.5 | 1530 | 68.5 | 1580 | 40 |
| STOWED | | 1150 | | 930 | | 770 | | 670 | | 580 | | 520 | | 460 | | 420 | | 390 | | 360 | |
| ERECTED RETRACTED | | 2940 | | 2770 | | 2640 | | 2560 | | 2490 | | 2440 | | 2400 | | 2370 | | 2340 | | 2320 | |
| ERECTED EXTENDED | | 3320 | | 3080 | | 2890 | | 2780 | | 2680 | | 2610 | | 2550 | | 2510 | | 2460 | | 2430 | |

DEDUCTIONS FOR JIB FROM MAIN BOOM CAPACITIES (LBS)

WARNINGS

1. THE JIB MUST BE IN THE STOWED POSITION, IF SO EQUIPPED, WHEN USING THIS OUTRIGGER CONFIGURATION.

**USE THIS CHART
WHEN PICKING
LOADS ON TIRES**



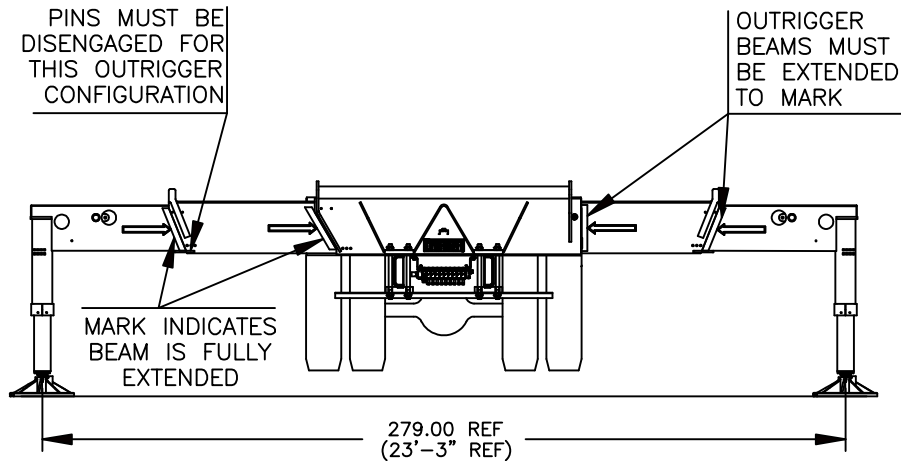
ON TIRE CAPACITIES

WARNINGS

| LMI CODE 6 | | | |
|------------------|----------------------|-------------------------------|----------------------------|
| LOAD RADIUS (FT) | MAX BOOM LENGTH (FT) | BOOM DIRECTLY OVER REAR (LBS) | STOWED JIB DEDUCTION (LBS) |
| 10 | 34 | 10000 | 1150 |
| 12 | 34 | 9000 | 1150 |
| 15 | 34 | 7600 | 1150 |
| 20 | 34 | 4650 | 1150 |
| 25 | 42 (A) | 2800 | 930 |
| 30 | 51 (B) | 1550 | 770 |

1. CRANE LOAD RATINGS ON TIRES ARE BASED ON THE CRANE BEING LEVEL AND TRAVELING ON A FIRM UNIFORM SURFACE (BLACK TOP, CONCRETE OR SIMILAR SURFACE).
2. TIRES MUST BE INFLATED TO 120 PSI FOR PICKING ON TIRES. CONSULT TRUCK MANUAL FOR PROPER INFLATION PROCEDURE.
3. THE JIB MUST BE IN THE STOWED POSITION, IF SO EQUIPPED, WHEN PICKING ON TIRES.
4. WHEN LIFTING ON TIRES, THE BOOM MUST BE CENTERED OVER THE REAR OF THE CRANE WITH THE SWING BRAKE AND THE HOUSELOCK ENGAGED.
5. KEEP THE LOAD CLOSE TO THE GROUND AND RESTRAINED FROM SWINGING.
6. WHEN THE RADIUS IS BETWEEN LISTED VALUES, USE THE SMALLER OF THE TWO LOAD RATINGS.
7. DO NOT OPERATE AT LONGER RADII THAN THOSE LISTED ON THE LOAD CHART.

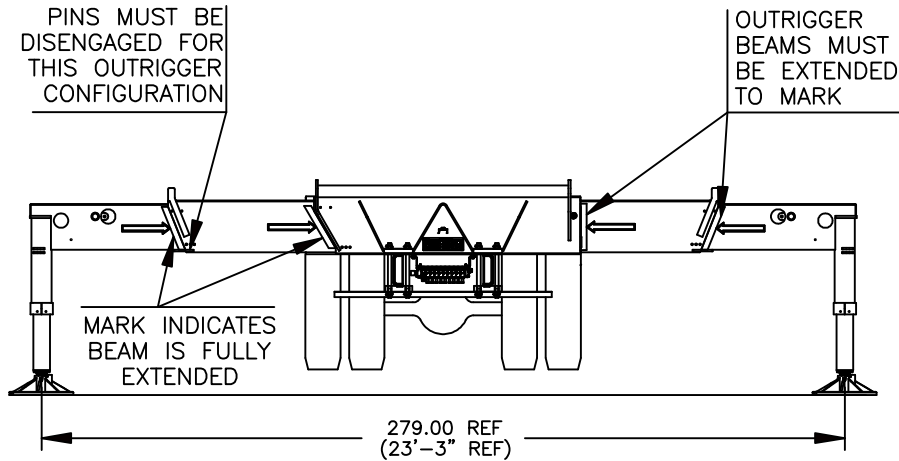
**USE THIS CHART ONLY
WHEN ALL OUTRIGGER
BEAMS ARE FULLY
EXTENDED**



32 FT RETRACTED JIB LIFTING CAPACITIES

| LOAD RADIUS (FT) | LOADED BOOM ANGLE (DEG) | 0' OFFSET | | 15' OFFSET | | | 30' OFFSET | | |
|------------------|-------------------------|---------------------------|---------------------------|-------------------------|---------------------------|----------------------------|-------------------------|----------------------------|----------------------------|
| | | CODE 7 OVER REAR (LBS) | CODE 8 FULL 360° (LBS) | LOADED BOOM ANGLE (DEG) | CODE 9 OVER REAR (LBS) | CODE 10 FULL 360° (LBS) | LOADED BOOM ANGLE (DEG) | CODE 11 OVER REAR (LBS) | CODE 12 FULL 360° (LBS) |
| 35 | 76.5 | 7300 | 7300 | | | | | | |
| 40 | 74.5 | 7300 | 7300 | | | | | | |
| 45 | 72.5 | 7300 | 7300 | 76 | 6500 | 6500 | | | |
| 50 | 70.5 | 7300 | 7300 | 73.5 | 6500 | 6500 | 76 | 5800 | 5800 |
| 55 | 68.5 | 6980 | 6980 | 71.5 | 6500 | 6500 | 74 | 5800 | 5800 |
| 60 | 66.5 | 6600 | 6600 | 69.5 | 6120 | 6120 | 72 | 5750 | 5750 |
| 65 | 64 | 6230 | 6230 | 67 | 5780 | 5780 | 69.5 | 5450 | 5450 |
| 70 | 62 | 5870 | 5330 | 65 | 5450 | 5450 | 67 | 5160 | 5160 |
| 75 | 59.5 | 5530 | 4520 | 62.5 | 5160 | 4930 | 64.5 | 4900 | 4900 |
| 80 | 57 | 5110 | 3830 | 60 | 4880 | 4200 | 62 | 4670 | 4500 |
| 85 | 54.5 | 4690 | 3240 | 57.5 | 4630 | 3570 | 59.5 | 4450 | 3830 |
| 90 | 52 | 4270 | 2720 | 54.5 | 4400 | 3010 | 56.5 | 4250 | 3250 |
| 95 | 49 | 3730 | 2260 | 51.5 | 3990 | 2530 | 53.5 | 4070 | 2730 |
| 100 | 46 | 3250 | 1860 | 48.5 | 3480 | 2090 | 50.5 | 3650 | 2260 |
| 105 | 43 | 2820 | 1490 | 45.5 | 3020 | 1700 | 47 | 3160 | 1840 |
| 110 | 39.5 | 2440 | 1170 | 42 | 2610 | 1350 | 43.5 | 2720 | 1460 |
| 115 | 35.5 | 2080 | 870 | 38 | 2230 | 1020 | 39 | 2320 | 1110 |
| 120 | 31.5 | 1770 | | 34 | 1890 | | 34.5 | 1940 | 790 |
| 125 | 26.5 | 1470 | | 29 | 1570 | | 29 | 1590 | |
| 130 | 20.5 | 1200 | | 22 | 1260 | | 20 | 1240 | |
| 135 | 10 | 950 | | | | | | | |
| 140 | | | | | | | | | |

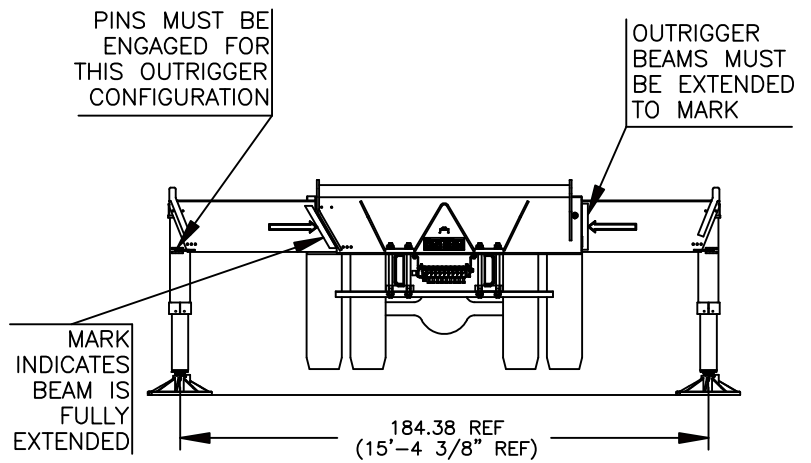
**USE THIS CHART ONLY
WHEN ALL OUTRIGGER
BEAMS ARE FULLY
EXTENDED**



49 FT EXTENDED JIB LIFTING CAPACITIES

| LOAD RADIUS (FT) | LOADED BOOM ANGLE (DEG) | 0° OFFSET | | 15° OFFSET | | | 30° OFFSET | | |
|------------------|-------------------------|-----------------|-----------------|-------------------------|-----------------|-----------------|-------------------------|-----------------|-----------------|
| | | CODE 13 | CODE 14 | LOADED BOOM ANGLE (DEG) | CODE 15 | CODE 16 | LOADED BOOM ANGLE (DEG) | CODE 17 | CODE 18 |
| | | OVER REAR (LBS) | FULL 360° (LBS) | | OVER REAR (LBS) | FULL 360° (LBS) | | OVER REAR (LBS) | FULL 360° (LBS) |
| 40 | 77 | 5400 | 5400 | | | | | | |
| 45 | 75 | 5400 | 5400 | | | | | | |
| 50 | 73.5 | 5400 | 5400 | 77 | 4700 | 4700 | | | |
| 55 | 71.5 | 5400 | 5400 | 75 | 4700 | 4700 | | | |
| 60 | 69.5 | 5400 | 5400 | 73.5 | 4480 | 4480 | 77 | 3520 | 3520 |
| 65 | 68 | 5230 | 5230 | 71.5 | 4280 | 4280 | 75 | 3520 | 3520 |
| 70 | 66 | 4930 | 4930 | 69.5 | 4100 | 4100 | 73.5 | 3410 | 3410 |
| 75 | 64 | 4660 | 4660 | 67.5 | 3940 | 3940 | 71 | 3310 | 3310 |
| 80 | 62 | 4410 | 4410 | 65.5 | 3790 | 3790 | 69 | 3210 | 3210 |
| 85 | 60 | 4170 | 3840 | 63.5 | 3650 | 3650 | 67 | 3130 | 3130 |
| 90 | 57.5 | 3950 | 3320 | 61.5 | 3520 | 3520 | 64.5 | 3050 | 3050 |
| 95 | 55.5 | 3750 | 2850 | 59 | 3400 | 3280 | 62 | 2980 | 2980 |
| 100 | 53 | 3560 | 2440 | 57 | 3290 | 2830 | 59.5 | 2910 | 2910 |
| 105 | 50.5 | 3380 | 2080 | 54.5 | 3190 | 2420 | 57 | 2860 | 2700 |
| 110 | 48 | 3000 | 1750 | 52 | 3050 | 2060 | 54.5 | 2810 | 2300 |
| 115 | 45.5 | 2650 | 1450 | 49 | 2920 | 1730 | 51.5 | 2760 | 1940 |
| 120 | 42.5 | 2330 | 1180 | 46 | 2570 | 1430 | 48.5 | 2730 | 1610 |
| 125 | 39.5 | 2030 | 930 | 43 | 2250 | 1150 | 45 | 2400 | 1300 |
| 130 | 36 | 1760 | | 39.5 | 1950 | 890 | 41 | 2070 | 1010 |
| 135 | 32 | 1510 | | 35.5 | 1670 | | 36.5 | 1750 | |
| 140 | 28 | 1280 | | 31 | 1410 | | 31 | 1450 | |
| 145 | 22.5 | 1070 | | 25 | 1160 | | | | |
| 150 | 15 | 870 | | 15.5 | 900 | | | | |
| 155 | | | | | | | | | |

**USE THIS CHART ONLY
WHEN ALL OUTRIGGER
BEAMS ARE IN THE MID
POSITION**



32 FT RETRACTED JIB LIFTING CAPACITIES

| LOAD RADIUS (FT) | 0° OFFSET | | 15° OFFSET | | 30° OFFSET | |
|------------------|-------------------------|-----------------|-------------------------|-----------------|-------------------------|-----------------|
| | LOADED BOOM ANGLE (DEG) | CODE 19 | LOADED BOOM ANGLE (DEG) | CODE 20 | LOADED BOOM ANGLE (DEG) | CODE 21 |
| | | FULL 360° (LBS) | | FULL 360° (LBS) | | FULL 360° (LBS) |
| 35 | 76.5 | 7300 | | | | |
| 40 | 74.5 | 7300 | | | | |
| 45 | 72.5 | 5680 | 76 | 6450 | | |
| 50 | 70.5 | 4410 | 73.5 | 5070 | 76 | 5660 |
| 55 | 68.5 | 3400 | 71.5 | 3990 | 74 | 4490 |
| 60 | 66.5 | 2590 | 69.5 | 3110 | 72 | 3550 |
| 65 | 64 | 1920 | 67 | 2380 | 69.5 | 2770 |
| 70 | 62 | 1360 | 65 | 1770 | 67 | 2110 |
| 75 | 59.5 | 880 | 62.5 | 1240 | 64.5 | 1540 |
| 80 | | | 60 | 790 | 62 | 1060 |

49 FT EXTENDED JIB LIFTING CAPACITIES

| LOAD RADIUS (FT) | 0° OFFSET | | 15° OFFSET | | 30° OFFSET | |
|------------------|-------------------------|-----------------|-------------------------|-----------------|-------------------------|-----------------|
| | LOADED BOOM ANGLE (DEG) | CODE 22 | LOADED BOOM ANGLE (DEG) | CODE 23 | LOADED BOOM ANGLE (DEG) | CODE 24 |
| | | FULL 360° (LBS) | | FULL 360° (LBS) | | FULL 360° (LBS) |
| 40 | 77 | 5400 | | | | |
| 45 | 75 | 5400 | | | | |
| 50 | 73.5 | 5070 | 77 | 4700 | | |
| 55 | 71.5 | 4050 | 75 | 4700 | | |
| 60 | 69.5 | 3220 | 73.5 | 3980 | 77 | 3520 |
| 65 | 68 | 2540 | 71.5 | 3220 | 75 | 3520 |
| 70 | 66 | 1970 | 69.5 | 2580 | 73.5 | 3130 |
| 75 | 64 | 1480 | 67.5 | 2040 | 71 | 2520 |
| 80 | 62 | 1060 | 65.5 | 1560 | 69 | 2000 |
| 85 | | | 63.5 | 1150 | 67 | 1540 |
| 90 | | | 61.5 | 790 | 64.5 | 1140 |
| 95 | | | | | 62 | 780 |