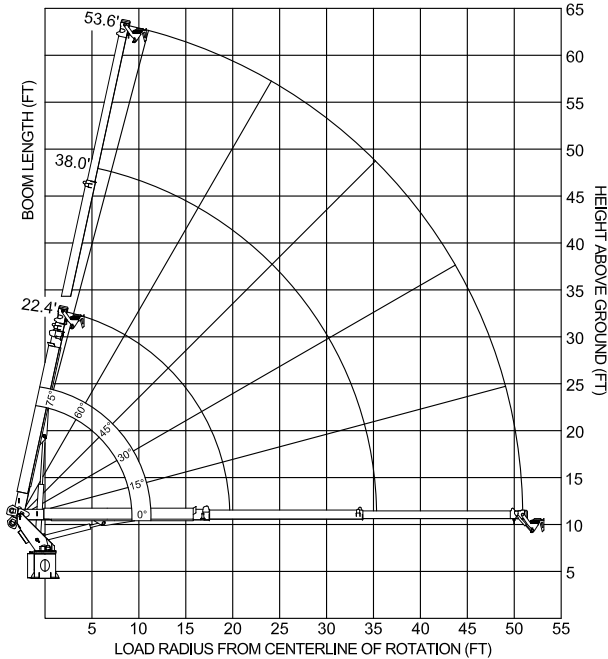


MAIN BOOM LOAD RATINGS
WITH PLATFORM REMOVED*

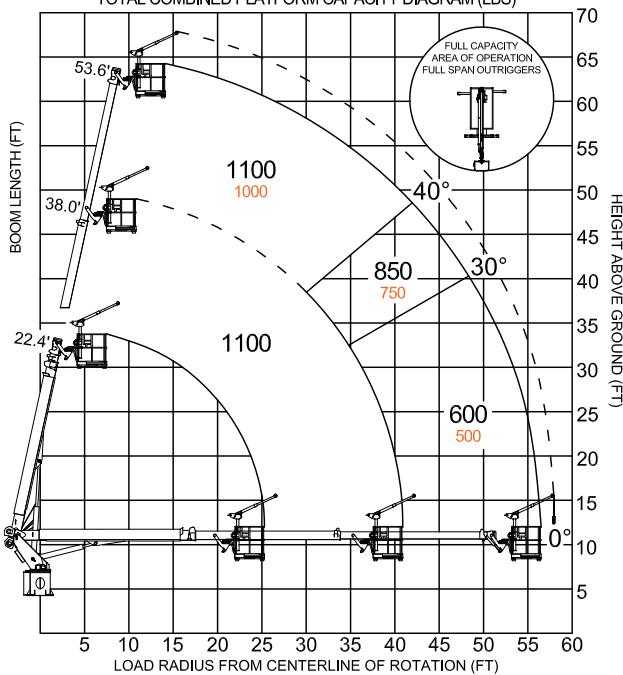
*DEDUCT 500 LBS WITH PLATFORM ATTACHED



MAXIMUM WORKING LOADS
AERIAL PLATFORM OPERATION
USE OUTRIGGERS AT ALL TIMES - AVOID JERKING LOADS

MAX PLATFORM CAPACITY:
600 LBS
MAX JOB CAPACITY:
500 LBS

TOTAL COMBINED PLATFORM CAPACITY DIAGRAM (LBS)



TECHNICAL SPECIFICATIONS

Working Height	65' / 19,8 m
Working Side Reach	59' / 17,9 m
Platform Capacity	600 lb / 272 kg
Main Winch Capacity	5,900 lb/2676 kg
Jib Winch Capacity	500 lb/227 kg
Front Outrigger Spread	17' / 5,2 m
Rear Outrigger Spread	12' / 3,7 m
Minimum GVWR	25,999 lb / 11793kg

AVAILABLE OPTIONS

- 500 lb. Capacity Stow & Go Jib Winch in Platform
- 5,900 or 2,000 lb Capacity Main Boom Winch
- Office in the Sky Accessories – 110V, welder, oxy/ acetylene, hydraulic tools, pressure washer and more
- Sign Forks on Work Platform
- Walkway Access to Platform
- Steel or Aluminum Toolboxes
- Steel, Wood or Aluminum Flatbed
- Composite or Wooden Outrigger Pads
- Platform Work Lighting
- Rear Back Up Camera
- Warning Lighting
- Overcab Protection
- Red, White or Custom Paint Colors
- 'Built for You' Additional Customization for Your Unique Application