

ELITE 910

TRUCK & TRAILER LOADER

ROTOBEC

TOUGH HANDLING EQUIPMENT



THE QUICKEST LOADER OUT THERE

UNMATCHED AGILITY. UNPARALLELED PRECISION.

TOUGH HANDLING EQUIPMENT

GET THE MOST FOR YOUR MONEY. Speed, precision, and agility, all packaged up into one tough handling machine.



The ELITE 910 is without question the toughest, most versatile, longest lasting knuckle boom loader of its size. With the industry's lowest total cost of ownership, the ELITE 910 is quickly becoming the favorite of owners and operators around the globe. Available in a variety of configurations, we have a solution for every conceivable application. The ELITE 910 and all of its major components are designed and manufactured by Rotobec right here in North America. If you are looking to lift more in less time than ever before, look no further, the ELITE 910 is your only option.



5,000 LBS TOTAL WEIGHT

8,800 LBS MAX LIFT CAPACITY

22 FT HEAVY DUTY BOOM (STANDARD)

20 GPM PUMP FLOW

3,200 PSI OPERATING PRESSURE

8 SEC MAIN BOOM CYCLE

ULTIMATE EFFICIENCY

INCREASE YOUR PAYLOAD

The ELITE 910 is without a doubt, the lightest loader available. Better fuel efficiency and more weight available for materials on your truck or trailer equates to more money in your pocket.

SMOOTH MOVEMENT

The 3,200 psi operating pressure allows the ELITE 910 to achieve unmatched levels of precision making it a dream to operate. Whether you're a rookie or a seasoned vet, this loader will make even the most inexperienced operator look like a pro.

LITTLE GIANT

The lightweight design of the ELITE 910, combined with an 8,800 lbs max lift capacity make it the undisputed heavyweight champion in its weight class. Lift more with less than you ever imagined.

SPEED MACHINE

With a pump flow of 19 gpm and a lightning fast main boom cycle time of 8 seconds, the ELITE 910 will let you move more in less time than ever before. Spend less time repositioning your loader and more time on what matters most: Working.

ENDLESS POSSIBILITIES

We understand that no two jobs are alike. Every industry and every environment have their own unique requirements. That's why we offer an extensive list of exclusive options on the ELITE 910 to suit all of your needs. If you're looking for something we haven't thought of, let us know. Rotobec is proud to offer complete customization on all of our products.

CUSTOMIZATION

Rotobec has been designing and manufacturing loaders for 40 years. During that time, our Custom loader division has worked on several projects for customers who had unique requirements that the competition could simply not meet. Our team of engineers worked closely with these customers to provide them with a solution to meet those needs.

If you have a requirement that is not met by our current product let us know. Rotobec is open to any custom project and we are always looking for a new challenge.

OPTIONS

- Rotocab
- Wipers
- Roof lights
- 4,000 W heater
- Air conditioning
- AM/FM/CD Radio
- Heated joysticks
- Grapple saw hydraulic circuit
- Telescopic booms up to 29'
- Multiple boom lengths
- Double pump hydraulic system
- Custom colors
- 55 gal oil tank
- Boom guard









A LOADER FOR EVERY APPLICATION

The ELITE 910 is used in every industry in a variety of applications. Its precision and agility make it the ideal machine for everything from log loading to railway maintenance and construction. No matter what the application, the ELITE 910 loader is fit for the job.

FORESTRY Used for the loading and unloading of trucks. Can be mounted on both on and off road vehicles.

RAIL Used in rail applications for the delivery to and clean up of components at railway maintenance sites.

WASTE Used commonly by municipalities for roadside waste collection and disaster clean up.

SCRAP & RECYCLING Used for the collection and transportation of scrap and recycling materials to processing facilities.

NO TIME FOR DOWNTIME

The ELITE 910 and nearly all of its components are designed and manufactured at our North American production facilities. We are dedicated to providing you with the most durable and reliable loaders on the market. Because we manufacture everything in house, our parts availability is second to none and our service team is committed to ensuring that your loader is running at maximum capacity at all times.

QUALITY COMPONENTS

Each component of the ELITE 910 is manufactured in house using the highest quality materials. Our components are built with one purpose: To outperform and outlast the competition.

SERVICE MADE SIMPLE

Rotobec engineers have designed the ELITE 910 in a way that makes it incredibly simple to service. With no need for special tools, the ELITE 910 can even be serviced in the field maximizing your machine uptime.

HYDRAULIC SYSTEM

Operating pressure	3,200 psi
Pump flow	2 x 19 gpm
Features	<ul style="list-style-type: none"> Double function joystick 8 port hydraulic oil manifold

SWING SYSTEM

Rotation	360° continuous rotation
Slewing ring	27" outside diameter
Rotation speed	10 rpm
Swing torque	Theoretical: 15,987 ft. lb @ 3,200 psi Actual: Estimated at 13,589 ft. lb
Features	<ul style="list-style-type: none"> Pedal activated rotation Locking mechanism for transportation mode

CYLINDERS

Main boom	5" bore, 3" rod
Stick boom	5" bore, 3" rod
Stabilizers	3" bore, 2" rod
Features	<ul style="list-style-type: none"> Bolt-on head Wear ring Chrome plated tempered steel rod

WEIGHT

With standard boom 4,940 lbs

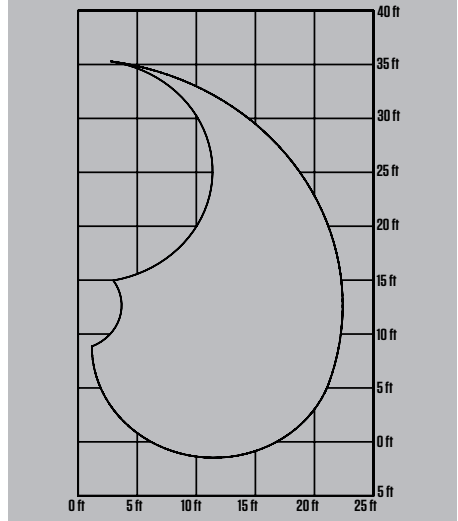
BOOM LENGTH OPTIONS

Standard	22'
Non-telescopic	21', 25' (other lengths available upon request)
Telescopic	26', 27' (other lengths available upon request)
Features	<ul style="list-style-type: none"> Induction tempered, chrome steel pins on bronze bushings Telescopic booms activated by electric button and proportionately controlled by lever

BOOM

Structure	Rectangular 6" x 8" structure made of high tensile steel
Pivots	2" diameter heat-treated and chromed pins mounted on bronze bushings
Complete Motion	Main: 8 sec w/ 20 gpm Stick: 6 sec w/ 20 gpm
Standard reach	22' (Main: 12'/ Stick: 10')
Features	<ul style="list-style-type: none"> Designed for closer access to loader frame 2 x 55 W halogen work lights

BOOM SWEEP ELITE 910 T&T M-22'



APPROXIMATE LIFT CAPACITY (lbs)

		DISTANCE FROM CENTER OF ROTATION (ft)			
		5	10	15	20
ELITE 910 T&T -M-22"	HEIGHT (ft)				
	30		6,520		
	25			5,200	
	20			5,290	3,920*
	15	7,660*	7,690	5,670	4,390
	10	3,580*	8,770	5,890	4,150
	5	5,380*	8,160	5,350	3,070
0		5,500	3,390		

APPROXIMATE LIFT CAPACITY (lbs)

		DISTANCE FROM CENTER OF ROTATION (ft)				
		5	10	15	20	25
ELITE 910 T&T -MT-26"	HEIGHT (ft)					
	30		6,340	4,490		
	25			4,990	3,800*	
	20			5,080	3,750*	
	15	7,450*	7,460	5,440	4,160	2,180*
	10	3,430*	8,490	5,630	3,910	2,280*
	5	5,220*	7,850	5,090	2,830	
0	6,850*	5,190	3,130	2,820		

* Limited by stick boom hydraulic capacity

** Lift capacities calculated at 100% operating pressure

*** We reserve the right to change specification and improve our products without notice or obligation

ROTOBEC LOCATIONS

CANADA EAST/
INTERNATIONAL
Sainte Justine, QC
Tel: 418.383.3002

USA EAST, CENTRAL
Littleton, NH
Tel: 603.444.2103

USA SOUTH
Dallas, TX
Tel: 972.242.9516

USA/CANADA WEST
Kelowna, BC
Tel: 250.765.1161