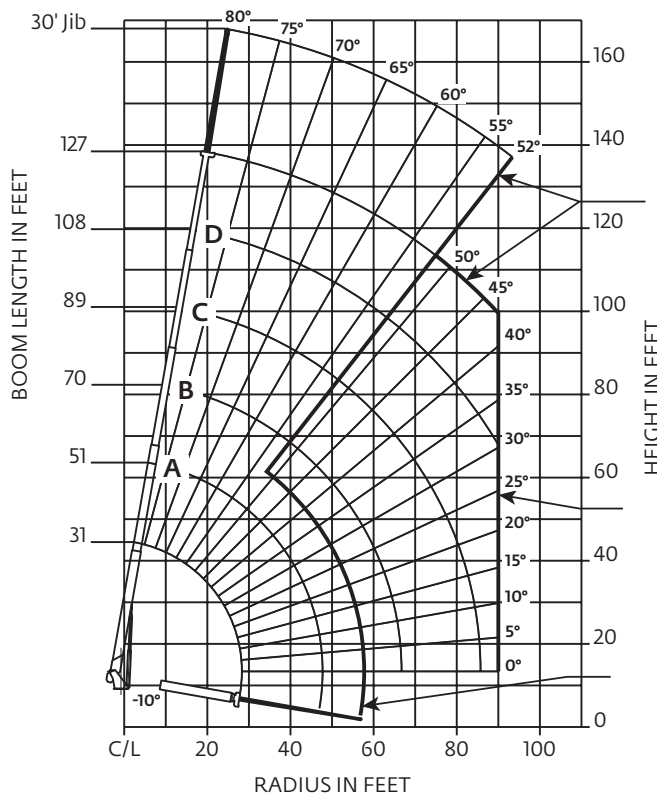


# Capacities

## Series 14127H: 38,7 m (127 ft) boom with 9,1 m - 16,45 m (30 ft - 54 ft) jib/full-span outrigger 7,5 m (24 ft 6 in)

Other Series 1400H Load Rating Charts are available. National Crane will send you a chart on request – or you may secure needed load rating information through your nearest National Crane dealer.



### CAUTION:

- Do not operate crane booms, jib extensions, any accessories or loads within 10 ft (3 m) of live power lines or other conductors of electricity.
- Jib and boom capacities shown are maximum for each section.
- Do not exceed capacities at reduced radii.
- Load ratings shown on the appropriate charts are maximum allowable loads with the crane mounted on a factory-approved truck and all outriggers at either full span or at mid span range and set on a firm level surface so that the crane is level and all tires are suspended.
- Always level the crane with the level indicator located on the crane.
- The operator must reduce load to allow for factors such as wind, ground conditions, operating speeds and their effects on freely suspended loads.
- Overloading this crane may cause structural collapse or instability.
- Weights on any accessories attached to the boom or loadline must be deducted from the load chart capacities.
- Do not exceed jib capabilities at any reduced boom lengths.
- Do not deadhead lineblock against boom tip when extending boom or winching up.
- Keep at least three wraps of loadline on drum at all times.
- Use only specified cable with this machine.

### NOTE:

1. Operate with jib by radius when main boom is fully extended. If necessary increase boom angle to maintain loaded radius.
2. Operate with jib by boom angle when main boom is not fully extended. Do not exceed rated jib capacities at any reduced boom lengths.

## Load chart

LOAD RADIUS (ft)	LOADED BOOM ANGLE	31 ft BOOM (lb)	LOADED BOOM ANGLE	A 51 ft BOOM (lb)	LOADED BOOM ANGLE	B 70 ft BOOM (lb)	LOADED BOOM ANGLE	C 89 ft BOOM (lb)	LOADED BOOM ANGLE	D 108 ft BOOM (lb)	LOADED BOOM ANGLE	127 ft BOOM (lb)
6	79.9	66,000										
8	76	47,550										
10	71.9	40,750	79.7	32,700								
12	67.7	35,800	77.4	29,750								
15	61.1	30,200	72.8	25,900	78.1	22,550						
20	49.5	23,950	67.7	20,450	74.8	18,950	78.8	16,600				
25	33.1	17,700	61.2	16,750	70.4	15,350	74.7	14,200	78.1	12,250	80.3	8200
30			54.1	14,000	65.9	12,850	72.2	11,850	76.1	10,550	78.5	7900
35			46.2	10,550	61.1	10,650	68.6	9700	73.6	9050	76.4	7600
40			36.5	8100	55.2	8350	64.3	8300	69.8	7850	73.8	7200
45			25.7	6250	50.9	6500	61.5	6700	67.8	6750	71.5	6400
50					45	5100	57.4	5300	64.6	5400	69.5	5500
55					38.3	4000	53.2	4200	61.4	4300	66.8	4400
60					29.8	3150	48.1	3300	57.4	3400	63.6	3500
65					19.1	2400	44	2600	54.6	2700	61.3	2800
70							38.7	2000	51.1	2100	58.4	2150
75							32.6	1450	47.3	1550	55.5	1650
80							24.5	1000	43.2	1100	52.2	1200
85							14	650	38.9	750	49.4	800
90											45.6	500
	0	12,150	0	4800	0	2000	0	500				
	ADDTO CAPACITIES WHEN NO JIB STOWED (lb)	500		300		250		200		150		100

LOAD RADIUS (ft)	LOADED BOOM ANGLE	30 ft JIB (lb)
30	79.9	3900
35	79.1	3850
40	77.5	3700
45	75.9	3550
50	74.2	3400
55	72.5	3250
60	70.7	3100
65	68.9	2950
70	66.4	2600
75	64.4	2050
80	62.1	1600
85	59.7	1200
90	57.3	850
95	54.8	550

\*Shaded areas are structurally limited capacities.

THIS CHART IS ONLY A GUIDE AND SHOULD NOT BE USED TO OPERATE THE CRANE.

The individual crane's load chart, operating instructions and other instructional plates must be read and understood prior to operating the crane.