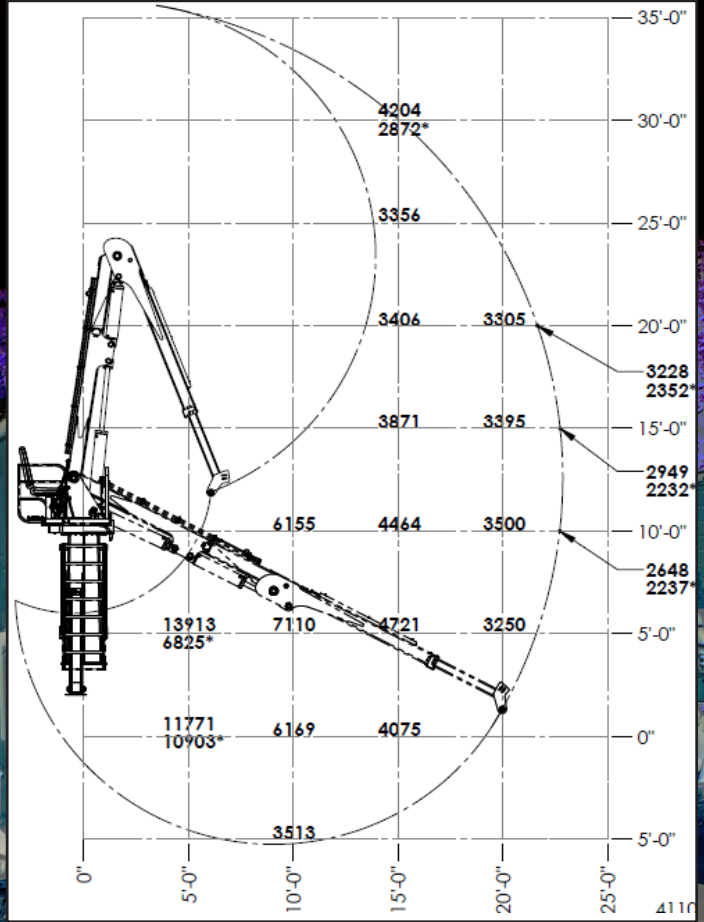
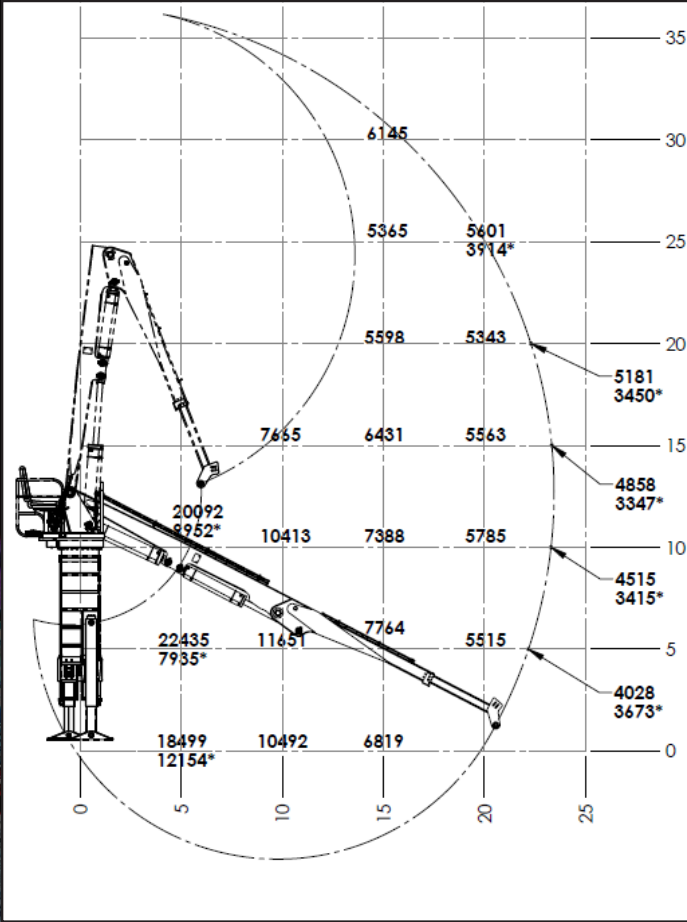


Lift Capacities

Model 1010-TM with 21' Boom & 3' Squirt Option (Extended)

Model 80-TM with 20' Boom & 3' Squirt Option (Extended)



MODEL	Lift @ 10' (3,048mm) @ 5' (1.5M) Vertical Height	Lift @ 15' (4,572mm) @ 5' (1.5M) Vertical Height	Lift @ 20' (6,096mm) @ 5' (1.5M) Vertical Height
Model 80-TM	7,110# (3,232 Kg.)	4,721# (2,146 Kg.)	3,250# (1,477 Kg.)
Model 1010-TM	11,651# (5,295 Kg.)	7,764# (3,529 Kg.)	5,515# (2,507 Kg.)



Northshore Manufacturing, Inc.
 530 Recycle Center Drive
 Two Harbors, Minnesota, U.S.A. 55616
 Phone: 218-834-5555 Fax: 218-834-5556

© Northshore Manufacturing, Inc. - All Rights Reserved - August 2013

