



KEY FEATURES

- » Full hydraulic boom extension for smooth 'point and shoot' functionality
- » Industry-leading unrestricted side reach and 360 degree stability
- » Oversized two-person steel work platform with EZR quick connect system and platform stowed jib winch
- » Electric/Hydraulic upper controls for smooth and precise operation
- » Full length subframe with hydraulic outriggers for excellent stability and long chassis life



Stow & Go Platform Jib Winch

Elliott's unique jib winch stows in the platform and features an extendable boom and mast to lengthen your reach and reduce setup times.



Material Handling Main Winch

Elliott's 2,000 lb main winch option allows lifting loads with the work platform attached or removed, increasing lifting versatility.



Oversized Cable Carrier

Reliably carries hydraulic, electric, welding, oxy/acetylene, air and other accessory lines to the work platform.



Compact, Versatile Design

Engineered to be installed on a 19,500 lb GVWR truck. 10' outrigger spread lets you set up in a single parking space.

OTHER FEATURES

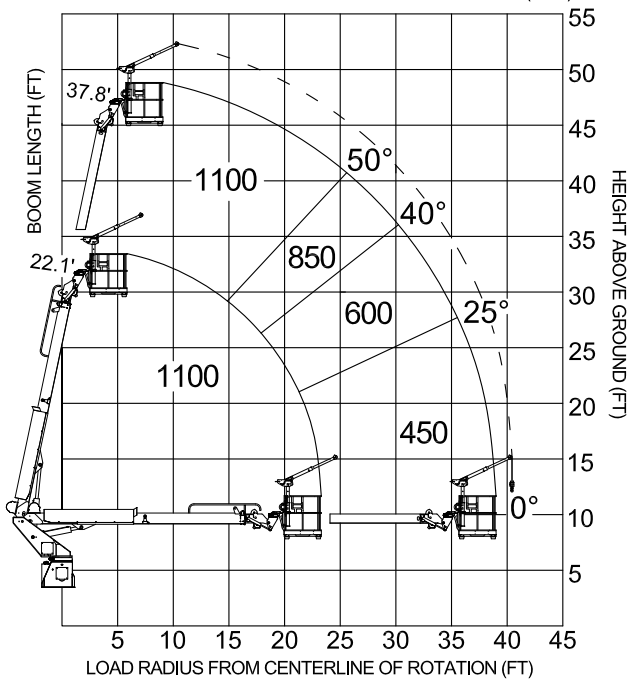
- » **EZR Work Platform:** 40" x 60" steel platform with skid-resistant aluminum floor. Removable for lifting loads with the main winch and boom tip sheave.
- » **Upper Controls:** Your choice of three stick or single stick upper controls.
- » **Convenience Package:** Includes outrigger auto leveling and boom auto stow, plus Bluetooth remote diagnostics.
- » **Control System:** Manual hydraulic controls mounted on turret. Electronic proportional three-stick remote controls in work platform with hi-lo range for smooth operation in tight spaces. Includes remote engine start/stop, engine speed, and emergency stop switch.
- » **Outriggers:** "A" type hydraulically powered main and behind cab outriggers.
- » **Certification:** Certified to ANSI A92.2 for Vehicle-Mounted Elevating and Rotating Aerial Devices.

MAIN BOOM LOAD RATINGS				
LOAD	22.1' RET BOOM		37.8' EXT BOOM	
RADIUS (FT)	ANGLE (DEG)	LOAD (LBS)	ANGLE (DEG)	LOAD (LBS)
2	77	2,000	-	-
6	65	2,000	77	2,000
10	53	2,000	71	2,000
13	41	2,000	66	2,000
16	26	2,000	60	2,000
18	-	-	57	2,000
20	-	-	53	2,000
22	-	-	50	1,700
24	-	-	45	1,450
26	-	-	40	1,300
28	-	-	35	1,150
30	-	-	28	1,000
32	-	-	19	850
-	0	2,000	0	800

TECHNICAL SPECIFICATIONS

Working Height	50' / 15,2 m
Working Side Reach	40' / 12,2 m
Platform Capacity	600 lb / 272 kg
Platform Size	40" x 60" / 102 x 152 cm
Main Winch Capacity	2,000 lb / 907 kg
Jib Winch Capacity	500 lb / 227 kg
Front Outrigger Spread	10' / 3 m
Rear Outrigger Spread	10' / 3 m
Minimum GVWR	19,500 lb / 8845 kg

TOTAL COMBINED PLATFORM CAPACITY DIAGRAM (LBS)



AVAILABLE OPTIONS

- » 500 lb. Capacity Stowable Jib Winch in the Work Platform
- » 2,000 lb. Capacity Material Handling Main Winch
- » 110V Lines, Welding Leads, Oxy/Acetylene Leads, Air Lines, Water Lines and More to the Work Platform
- » (2) Sign Forks on the Work Platform
- » Walkway Access to the Work Platform with the Boom Stowed
- » Steel, Wood, or Aluminum Flatbeds
- » Various Rear Bumper Styles
- » Steel or Aluminum Toolboxes
- » Composite or Wooden Outrigger Pads
- » Spanish/Metric Charts
- » Paint White, Red or Custom Colors
- » Much More...